

CALIFORNIA POLYTECHNIC STATE UNIVERSITY
San Luis Obispo, California 93407
ACADEMIC SENATE

FILE COPY

Academic Senate
Executive Committee
Summer Agenda
August 3, 1993
UU 216 3:00-5:00 p.m.

*all minutes
were
removed*

- I. Minutes: Approval of the Academic Senate Executive Committee/Senate minutes for May 27, June 8, June 29, July 2, and July 13, 1993 (pp. 2-13).
- II. Communication(s) and Announcement(s):
 - A. Please let Margaret know what your e-mail account name/number is before the end of this meeting.
 - B. President Baker has approved the following resolutions:

AS-400-93/PPC	selection of campus representative to the ACIP
AS-401-93/PPC	revision of University Leave with Pay Guidelines
AS-402-93/EX	resolution on Home Economics
AS-403-93/PE	department name change for PE Department
AS-405-93/GE&B	double counting of GE&B courses
- III. Reports:
 - A. Academic Senate Chair
 - B. President's Office
 - C. Vice President for Academic Affairs' Office
 - D. Statewide Senators
 - E. CFA Campus President
 - F. ASI Representatives
- IV. Consent Agenda:
- V. Business Item(s):
 - A. Committee appointments (pp. 14-19).
 - B. Resolution to Change the Architecture Department to the School of Architecture (pp. 20-23).
 - C. Program Review and Improvement Committee findings and report for the M.S. in Psychology program **[PLEASE BRING MATERIALS MAILED TO YOU EARLIER THIS SUMMER]**.
 - D. Approval of the 1993-1994 Academic Senate meeting calendar (p. 24).
- VI. Discussion Item(s):
 - A. Invitation to Molly Broad to address the Academic Senate (p. 25).
 - B. Discuss change in time base for Margaret.
 - C. Charter campus - continue discussion and approve (1) flowchart, (2) process for selecting faculty to the proposed task forces (pp. 26-27).
 - D. Calendaring system - continue discussion on the what we want to achieve at Cal Poly and how a different calendar might support these goals. President Baker would like to apply for productivity money in '93-94 and asked that the Executive Committee prepare some preliminary suggestions that can be taken up by a committee at the beginning of fall quarter.
 - C. Definition of "quality" - at our May 7, 1993 meeting, President Baker asked the Senate to define the term "quality." How should we approach this?
- VII. Adjournment:

ACADEMIC SENATE/COMMITTEE VACANCIES
FOR 1993-1994

Academic Senate vacancies

CBUS one vacancy
temporary faculty one representative (nonvoting)
parliamentarian

Academic Senate Committee vacancies

CAGR	Elections Committee Library Committee Personnel Policies Committee Status of Women Committee Student Affairs Committee University Professional Leave Committee
CAED	Budget Committee Constitution & Bylaws Committee Curriculum Committee Elections Committee General Education & Breadth Committee Instruction Committee Library Committee Long-Range Planning Committee Personnel Policies Committee Research Committee Student Affairs Committee University Professional Leave Committee Cultural Pluralism Subcommittee
CBUS	Constitution & Bylaws Committee Elections Committee General Education & Breadth Committee Status of Women Committee
CENG	Fairness Board General Education & Breadth Committee Long-Range Planning Committee Personnel Policies Committee University Professional Leave Committee
CLA	Program Review and Improvement Committee (Replacement needed for J Culver, '93-94. Election to be held by the Academic Senate Executive Committee)

PATRICE ENGLE
RICHARD SHAFFER

CSM

Budget Committee
Constitution & Bylaws Committee
Curriculum Committee
Elections Committee
General Education & Breadth Committee
Personnel Policies Committee RAY TERRY
Status of Women Committee
Student Affairs Committee
University Professional Leave Committee

PCS

Budget Committee
Curriculum Committee
Elections Committee
Instruction Committee
Library Committee
Long-Range Planning Committee

ALL COLLEGES

Distinguished Teaching Awards Committee
four vacancies (remaining member: Abraham Shani
(Mgt)

JAY DEVORE (stat)
LINDA HALISKY (Engl)
HARVEY GREENWALD (Math) [incumbent]
DANE JONES (Chem)
SUSAN McBRIDE (UCTE) [incumbent]
PHILIP RUGGLES (GrpCom)
GEORGE SUCHAND (SocSci)
CALVIN WILVERT (SocSci) [incumbent]

Status of Women Committee -
part-time representative MARY STALLARD

GE&B Subcommittee, Area A (Lang & Crit Thking)
three vacancies

GE&B Subcommittee, Area E (Lifelong Undrstg/Dev)
one vacancy

July 1993

1993 - 1994

**CAL POLY
UNIVERSITY-WIDE COMMITTEES**

C.A.M. COMMITTEES with vacancies

172.29

ANIMAL WELFARE COMMITTEE

Senate nominations: 1 Academic Senate representative (whose primary concerns are in a nonscientific area; i.e., ethicist, lawyer, clergy).

VACANCY:

replacement for Steven Daugherty (AniSci). Dr. Daugherty is the present Academic Senate representative to this committee (1992-1995). However, the Senate representative must be from a nonscientific area. Dr. Daugherty's position on the committee must be replaced as soon as possible for immediate certification renewal which continues grant funding presently in place.

172.4

CAMPUS PLANNING COMMITTEE

Senate nominations: 1 Academic Senate representative

VACANCY: ONE VACANCY - all instructional colleges/PCS

Biggs, Joseph	(CBUS)	
Freeman, Jo Anne	(CENG)	3 of 3
Harris, John	(CAGR)	2 of 2
O'Keefe, Tim	(CAGR)	3 of 3
Osbaldeston, Roger	(CAED)	
Stefanco, Carolyn	(CLA)	2 of 2

172.28

CHILD CARE ADVISORY COMMITTEE

Senate nominations: 1 Academic Senate representative

VACANCY: ONE VACANCY - all instructional colleges/PCS

Stefanco, Carolyn	(CLA)	1 of 2
-------------------	-------	--------

172.9

DISABLED STUDENTS ADVISORY COMMITTEE

Senate nominations: 4 Academic Senate representatives (with expertise/special interest in physical and learning disabilities).

VACANCIES: TWO VACANCIES - all instructional colleges/PCS

Bentley, Scott	(CLA)	
Federer, Dale	(CLA)	
Grant, Brad	(CAED)	
Harrington, Mary Kay	(CLA)	

172.10

EL CORRAL BOOKSTORE ADVISORY COMMITTEE

Senate nominations: 2 Academic Senate representatives

VACANCIES: ONE VACANCY - all instructional colleges/PCS

Locker, Jeannette	(CAGR)	
-------------------	--------	--

- 172.15 FOUNDATION FOOD SERVICE ADVISORY COMMITTEE
Senate nominations: 1 Academic Senate representative
- VACANCY: ONE VACANCY - all instructional colleges/PCS**
Lambert, Walt (PCS)
Vance, Robert (CAGR)
- 172.22 PUBLIC SAFETY ADVISORY COMMITTEE
Senate nominations: 2 Academic Senate representatives
- VACANCIES: ONE VACANCY - all instructional colleges/PCS**
Borland, Jim (CAED) 2 of 2
Cavaletto, Richard (CAGR)
Elimimian, Isaac (CLA) 1 of 1
Kellogg, Bill [incumbent] (CAGR)
Plummer, Bill (CAGR) 2 of 2
Wheatley, JoAnn (CAGR)
- 172.11 RESOURCE USE COMMITTEE
Senate nominations: 3 Academic Senate representatives
- VACANCIES: ONE VACANCY - all instructional colleges/PCS**
Freberg, Laura (CLA)
Waller, Julia (PCS) 2 of 2
- 172.25 STUDENT AFFAIRS COUNCIL
Senate nominations: 1 Academic Senate representative and the chair of the Academic Senate Student Affairs Committee
- VACANCY: ONE VACANCY - all instructional colleges/PCS**
Jones, Carolyn (PCS) 1 of 2
Vanasupa, Linda (CENG) 2 of 4
- 172.30 SUBSTANCE ABUSE ADVISORY COMMITTEE
Senate nominations: 1 Academic Senate representative
- VACANCY: ONE VACANCY - all instructional colleges/PCS**
Jones, Carolyn (PCS) 2 of 2
- 172.27 UNIVERSITY UNION ADVISORY BOARD
Senate nominations: 1 Academic Senate representative
- VACANCY: ONE VACANCY - all instructional colleges/PCS**
Troxel, Patricia (CLA) 2 of 2
Walters, Robert (PCS)

July 1993

1993 - 1994

CAL POLY
UNIVERSITY-WIDE COMMITTEES

NON-C.A.M. COMMITTEES with vacancies

AFFIRMATIVE ACTION FACULTY DEVELOPMENT PROGRAM PROPOSAL REVIEW COMMITTEE

(This committee is responsible for reviewing proposals for the Affirmative Action Faculty Development Program and evaluating the CSU Forgivable Loan/Doctoral Incentive Program for minorities and women.)

M: 1 Academic Senate representative (**must be tenured**)

T: 1 year

VACANCY: ONE VACANCY - all instructional colleges/PCS

O'Keefe, Tim (CAGR)

Ortiz, Maria Elena (CSM)

Waller, Julia (PCS)

ASI STUDENT SENATE

(The Student Senate is the governing board of Associated Students, Inc. of Cal Poly. The Academic Senate representative must attend its Wednesday night meetings.)

M: 1 Academic Senate representative

T: 1 year

VACANCY: ONE VACANCY - all instructional colleges/PCS

no nominations received

CONFERENCE AND WORKSHOP ADVISORY COMMITTEE

(The function of this committee is to advise on policy issues regarding conferences and workshops, interpret the Administrative Bulletin to resolve problems which may arise, and to review and evaluate fiscal activities.)

M: 2 Academic Senate nominees

T: 1 year

VACANCY: TWO VACANCIES - all instructional colleges/PCS

Field, Gary (CLA)

Levenson, Harvey (CLA)

INFORMATION RESOURCES MANAGEMENT POLICY AND PLANNING COMMITTEE

(This committee is charged with the ongoing assessment of strategic plans and policies related to the campus-wide management and use of existing and planned information systems and services.)

M: 3 faculty--who have a professional interest and expertise in information systems--appointed by the President in consultation with the Academic Senate Chair

T: 3 years, two terms maximum

VACANCY: ONE VACANCY - all instructional colleges/PCS

Morrison, Kent (CSM)

Tseng, James (CENG)

INSTRUCTIONALLY RELATED ACTIVITIES ADVISORY (IRA)

(The IRA advises the President regarding both the level of student fees and allocation of fee revenue.)

M: 1 Academic Senate representative

T: 1 year

VACANCY: ONE VACANCY - all instructional colleges/PCS
no nominations received

UNIVERSITY UNION EXECUTIVE COMMITTEE (UEC)

(The UEC provides student input to Union management, provides "direct supervision of the Union Director, and checks and balances of adherence to Union policy by management.")

M: 1 Academic Senate representative

T: 1 year

VACANCY: ONE VACANCY - all instructional colleges/PCS
McNeil, Marilyn (PCS)

RECEIVED

20

State of California

JUL 15 1993

CAL POLY

San Luis Obispo, CA 93407

MEMORANDUM

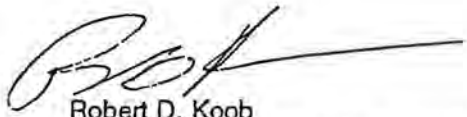
Academic Senate

To: Paul Neel, Dean
College of Architecture and Environmental Design

Date: June 10, 1993

File No.:

Copies: Glenn Irvin
Michael Suess
Elaine Doyle

From: 
Robert D. Koob
Vice President for Academic Affairs

Subject: REQUEST FOR "SCHOOL" DESIGNATION

This is in response to your initial memorandum of January 26, 1993, at which time you requested that the Architecture Department be designated as the School of Architecture. Based upon the unanimous positive recommendation of the Academic Deans' Council on June 7, 1993, and the justifications noted in your and the Department's memoranda, I am hereby approving the redesignation to be effective July 1, 1993.

RECEIVED

JUN 17 1993

DEAN, SCHOOL OF ARCHITECTURE
AND ENVIRONMENTAL DESIGN

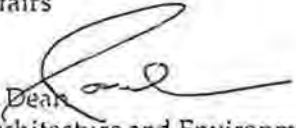
State of California

College of Architecture and Environmental Design
California Polytechnic State University
San Luis Obispo, California 93407

Memorandum

January 26, 1993

To: Robert Koob, Vice President
Academic Affairs

From: Paul R. Neel,  Dean
College of Architecture and Environmental Design

Subject: REQUEST FOR "SCHOOL" DESIGNATION

Bob, this is the proposal to change the Architecture Department designation to the *School of Architecture* which we discussed last month. At that time you expressed concern over the management level of the organization. I believe the enclosed memo from Allan Cooper and Jim Bagnall explains that the new model does not create any new layers of management as the directors are at the same level as the department heads. The director designation is only interim until we decide whether these managers will have program or functional responsibilities.

The advantages of a School designation are more external than internal. This fact is pointed out in the attached memo. I fully support this request and am anxious to discuss the procedures of implementation.

Attachment

ARCH.School.Des

M e m o r a n d u m

California Polytechnic State University
San Luis Obispo, CA 93407

To: Paul R. Neel, Dean Date: 1/22/93
College of Architecture and Environmental Design

From: James R. Bagnall & Allan R. Cooper *ARC* File:
Directors, Architecture Department

Subject: REQUEST FOR "SCHOOL" DESIGNATION Copies:

We are requesting that you initiate the process to change our official designation from "Department of Architecture" to "School of Architecture". We seek this change in name designation for the following reasons:

1. The Architecture Department at Cal Poly is the largest accredited undergraduate architecture program in North America and the second largest department at Cal Poly.
2. The undergraduate and graduate programs are comprised of a number of fifth year concentrations and graduate special study areas with the near-term proposed addition of new programs such as Interior Architecture, HVAC and an Environmental Design Program for undeclared majors.
3. The Department currently offers two professional degree programs (BArch & MSArch) and is in the final planning stages of a new joint BArch/MBA degree. The Graduate Program has an overall enrollment of 38 students while the Undergraduate Program has an overall enrollment of 826 students.
4. The Department has developed a unique, "professionally focused" curriculum, a highly regarded "school of thought" which has helped it to attain the stature normally associated with the "School" designation.
5. Of the fifteen largest architecture programs in North America, only two have the designation of "department". *
6. Professional programs leading to registration or licensure, such as law or medicine, are normally designated "Schools".
7. "Colleges" are commonly comprised of "Schools" and "Departments" and that half of the College's resources, faculty and students are vested in the Architecture Department.
8. The only professional association of architecture programs in North America is entitled the "Association of Collegiate Schools of Architecture" (ACSA) and that our program's stature within that organization will be greatly enhanced through this proposed name change.

9. As we move more aggressively into the area of fundraising and development, the prestige associated with the "School" designation will be recognized by potential donors.

We have met with our faculty to discuss this name change and the faculty are in full support of this recommendation.

With this name change, we are also proposing a new management model. Attached is a copy of the management model endorsed by the Architecture Department faculty on December 8, 1992. We feel that the complexity of the program and the size of the department mandates a management model unlike that of considerably smaller departments.

The current management model requires that the entire faculty (40-50 full- and part-time faculty) be assembled to advise on administrative decisions, address scheduling problems, implement budget changes, and/or other crucial areas of departmental administration. When response time does not permit assembling the entire faculty, the directors are forced to act without appropriate input from them. Implementation of a formal advisory group will enhance faculty communication and offer an avenue of representation for specialty areas within the discipline. This group will be small enough to hold regular (or emergency) meetings in order to fully represent the faculty in the decision-making process. The "School" of Architecture Advisory Board will consist of elected faculty representatives from the various academic units within the "School". These advisory representatives will be designated "Associate Directors" and will meet as a body to advise the Directors on policies, scheduling, budget allocations, priorities, etc. This model creates no new layer of supervision or personnel review, nor do the Associate Directors have any fiscal or management authority within the "School".

Please do not hesitate to ask for further clarification should you have any questions in this matter.

*Source: "Guide to Architecture Schools in North America", ACSA Press, 1989.

	Full Time Students	Full Time Faculty	Program Name	Admin. Title
Cal Poly, S.L.O.	826	41	?	Director
Univ. of Florida	800	90	Program	Director
VPI	747	68	<u>College</u>	Dean
Texas Tech Univ.	689	21	<u>College</u>	Dean
U.C. Berkeley	669	44	Dept.	Chair
Boston Arch. Center	644	1	Center	Dean
Univ. of Texas, Arl.	635	23	<u>School</u>	Dean
Univ. of Ill. Urbana	598	47	<u>School</u>	Director
Pratt Institute	530	16	<u>School</u>	Dean
Univ. of Kansas	520	32	Program	Chair
CCUNY	485	22	<u>School</u>	Dean
Univ. of Wisconsin	477	31	<u>School</u>	Dean
Univ. of Arizona	466	21	<u>College</u>	Dean
Ball State Univ.	460	45	Dept.	Chairman
Univ. of Illinois	460	27	<u>School</u>	Director

Academic Senate Calendar for 1993-1994

All Senate and Executive Committee meetings are held in UU 220 from 3:00 to 5:00pm unless otherwise noted.

September 13

Fall Conference:

1:30pm Academic Senate Standing Committees (Chumash)

2:45pm Academic Senate General Session (UU 207)

September 21

Executive Committee

October 5

Senate

October 12

Executive Committee

October 26

Senate

November 2

Executive Committee

November 16

Senate

November 30

Senate (if needed)

December 6 through January 2, 1993 - finals and quarter break

January 11

Executive Committee

January 25

Senate

February 1

Executive Committee

February 15

Senate

February 22

Executive Committee

March 8

Senate

March 14 through March 27, 1993 - finals and quarter break

March 29

Executive Committee

April 12

Senate

April 19

Executive Committee

May 3

Senate

May 10

Executive Committee

May 24

Senate

May 31

Senate (if needed)

June 6 through June 19, 1993 - finals and quarter break

The calendar is structured to have an Executive Committee meeting the Tuesday following each Academic Senate meeting. It also allows for 14 days between the Executive Committee and the next Academic Senate meeting for the completion and timely delivery of the agenda to the senators before the Academic Senate meetings.

Date _____

Molly Broad
Senior Vice Chancellor,
Administration and Finance
Office of the Chancellor
The California State University
400 Golden Shore
Long Beach, CA 90802-4275

Dear Vice Chancellor Broad:

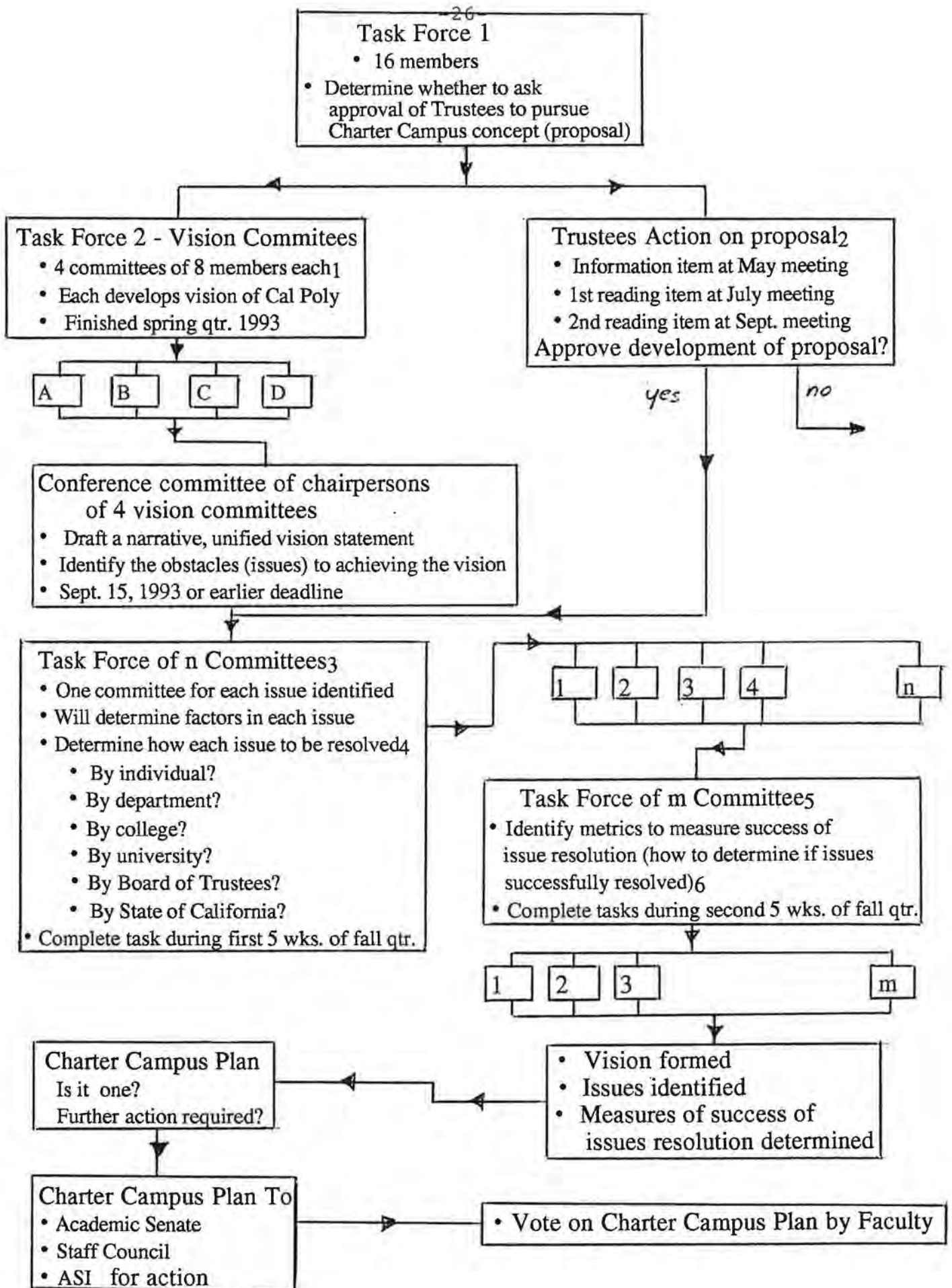
On behalf of our Academic Senate, I would like to extend an invitation to you to speak to our Academic Senate some time during fall quarter. Our Senate meetings for fall are scheduled for: _____, _____, _____; however, if you are not available on any of these dates, we can schedule a special meeting of the Senate on another Tuesday between 3 and 5pm.

I am sure many of our members would appreciate the opportunity to discuss the issues and conditions affecting higher education today. It would also be helpful to hear what the philosophies and goals of the Chair's office are for the CSU and the long-term strategic plan for minimizing administrative centralization of the individual CSU campuses.

I appreciate your willingness to speak to our Senate and I look forward to hearing from you soon. I can be reached on campus at 805/756-1258.

Sincerely,

Jack Wilson
Chair, Academic Senate



1 Two of the committees had four faculty, including department heads, two staff and two students while two have three faculty, three staff and two students.

2 Trustees must approve before the Charter Campus proposal development process continues beyond September 5, 1993.

3 These committees will be constituted similarly to those of Task Force 2 in terms of number of faculty, staff and students.

4 Once an issue is identified, the party or parties who can resolve it must be identified. For example presently all parking fee moneys collected here are sent to the Chancellor's Office and put into a pot there. Then when the campus wishes to add parking space or improve an existing parking lot the campus administration must request the money from the Chancellor's Office along with the justification (the issue).

5 If the campus wished to keep all of its parking fee money on this campus, then approval for that change in CSU policy would have to come from the Board of Trustees (resolution).

Adopted:

ACADEMIC SENATE
OF
CALIFORNIA POLYTECHNIC STATE UNIVERSITY
San Luis Obispo, California

AS- -93/
RESOLUTION ON
CHARTER CAMPUS FOR CAL POLY

Background: Due to the continuing erosion of fiscal support for higher education and the effect this has on Cal Poly's academic and support programs, consideration for restructuring the university as a charter campus is presently being investigated. A charter campus structure would allow Cal Poly more autonomy in governing its direction and resources. In view of the growing demands being placed on the state's universities, creative approaches are needed to resist the deleterious effects posed by decreasing state support and increasing state legislation. The ability of the university to respond to the fiscal crisis is restrained by the overly centralized, highly bureaucratic system under which it strives. As a charter campus, Cal Poly would remain a state-funded institution but would be relatively free from the bureaucratic constraints in the use of these funds. In addition to helping remedy the restrictions imposed by decreasing state funds, a charter campus structure could also provide opportunities to develop new and innovative ways of delivering education.

- WHEREAS, The unique nature of Cal Poly's academic programs and its reputation for distinctive teaching make it an appropriate campus to consider the special opportunities provided under a charter campus structure; and
- WHEREAS, Cal Poly's self-design as a charter campus could allow it to enhance its excellent reputation by gaining greater control over the quality of its programs, develop new and innovative ways to promote more learning, and create less burden for its faculty and staff; and
- WHEREAS, The desire to consider the benefits of a charter campus have been impeded by faculty concern regarding the manner in which such planning and committee selections to develop this concept have taken place; and
- WHEREAS, Protection of existing employee rights and benefits has not been assured in the deliberations regarding charter campus; therefore, be it
- RESOLVED: That there be appropriate and substantial faculty involvement in developing principles that would guide the policies of a charter university including principles that would address faculty welfare issues; and, be it further
- RESOLVED: That current rights and benefits not be diminished under a charter campus design; and, be it further
- RESOLVED: That the charter campus model developed for Cal Poly establish its own internal governance; and, be it further
- RESOLVED: That the minutes of all charter campus committees and task groups be sent on a timely basis to the Academic Senate for viewing by faculty; and, be it further

- RESOLVED: That Cal Poly confer with the Academic Senate CSU in defining the concept of a charter campus throughout its deliberations; and, be it further
- RESOLVED: That the decision to restructure Cal Poly to a charter campus be made only after a positive recommendation has been received from Cal Poly's Academic Senate; and, be it further
- RESOLVED: If a positive recommendation has been received from the Academic Senate, that the final draft of the charter campus proposal for Cal Poly be submitted to a vote of the General Faculty and the vote be made on a section-by-section basis, each section requiring a majority of the votes before being sent to the Chancellor and Board of Trustees for approval.

Proposed By the Academic Senate
Executive Committee
May 27, 1993

See - min 8-3-93

Adopted:

ACADEMIC SENATE
OF
CALIFORNIA POLYTECHNIC STATE UNIVERSITY
San Luis Obispo, California

AS- -93/
RESOLUTION ON
CHARTER CAMPUS FOR CAL POLY

Background: Due to the continuing erosion of fiscal support for higher education and the effect this has on Cal Poly's academic and support programs, consideration for restructuring the university as a charter campus is presently being investigated. A charter campus structure would allow Cal Poly more autonomy in governing its direction and resources. In view of the growing demands being placed on the state's universities, creative approaches are needed to resist the deleterious effects posed by decreasing state support and increasing state legislation. The ability of the university to respond to the fiscal crisis is restrained by the overly centralized, highly bureaucratic system under which it strives. As a charter campus, Cal Poly would remain a state-funded institution but would be relatively free from the bureaucratic constraints in the use of these funds. In addition to helping remedy the restrictions imposed by decreasing state funds, a charter campus structure could also provide opportunities to develop new and innovative ways of delivering education.

- WHEREAS, The unique nature of Cal Poly's academic programs and its reputation for distinctive teaching make it an appropriate campus to consider the special opportunities provided under a charter campus structure; and
- WHEREAS, Cal Poly's self-design as a charter campus could allow it to enhance its excellent reputation by gaining greater control over the quality of its programs, develop new and innovative ways to promote more learning, and create less burden for its faculty and staff; and
- WHEREAS, The desire to consider the benefits of a charter campus have been impeded by faculty concern regarding the manner in which such planning and committee selections to develop this concept have taken place; and
- WHEREAS, Protection of existing employee rights and benefits has not been assured in the deliberations regarding charter campus; therefore, be it
- RESOLVED: That there be appropriate and substantial faculty involvement in developing principles that would guide the policies of a charter university including principles that would address faculty welfare issues; and, be it further
- RESOLVED: That current rights and benefits not be diminished under a charter campus design; and, be it further
- RESOLVED: That the charter campus model developed for Cal Poly establish its own internal governance; and, be it further
- RESOLVED: That the minutes of all charter campus committees and task groups be sent on a timely basis to the Academic Senate for viewing by faculty; and, be it further

RESOLVED: That Cal Poly confer with the Academic Senate CSU in defining the concept of a charter campus throughout its deliberations; and, be it further

RESOLVED: That the decision to restructure Cal Poly to a charter campus be made only after a positive recommendation has been received from Cal Poly's Academic Senate; and, be it further

RESOLVED: If a positive recommendation has been received from the Academic Senate, that the final draft of the charter campus proposal for Cal Poly be submitted to a vote of the General Faculty and the vote be made on a section-by-section basis, each section requiring a majority of the votes before being sent to the Chancellor and Board of Trustees for approval.

Proposed By the Academic Senate
Executive Committee
May 27, 1993

Exec - memo 8-5-93

**CSU Terminal Masters Degrees
Fulfilling MFCC Licensing Requirements
(Corrected* - 8/3/93)**

<u>University</u>	<u>Program</u>	<u>Department</u>	<u>Total Units</u>
Bakersfield	MS Psychology	Psychology	90 qtr
Chico	MS Psychology	Psychology	48 sem
Dominguez Hills	MA Psychology	Psychology	30 sem + MFCC classes
Fresno	MS Counseling	Education	90 qtr
Fullerton	MS Clinical Psychology	Psychology	48 sem + MFCC classes
	MS Counseling	Counseling	48 sem
Hayward	MS Counseling	Ed Psych	60 sem
Humboldt	MA Psychology	Psychology	60 sem
Long Beach	MS Psychology	Psychology	49 sem
	MS Counseling*	Ed Psych & Adm	58 sem
Los Angeles	MS Psychology	Psychology	73-86 qtr
	MS Counseling	Education	79-86 qtr
Sacramento	MA Psychology	Psychology	30 sem + MFCC classes
	MS Counseling*	Counselor Ed	60 sem
San Bernadino	MS Psychology	Psychology	78-82 qtr
San Diego	MS Counseling	Counselor Ed	60 sem
San Francisco	MS Psychology	Psychology	48 sem
	MS Counseling*	Counseling	60 sem
San Jose	MS Psychology	Psychology	48 sem
	MS MFC Counseling*	Interdeptal: Psych & Soc	48 sem + MFCC classes
San Luis Obispo	MS Psychology	Psych/HD	90 qtr + MFCC classes
Sonoma	MA Counseling	Counseling	60 sem
Stanislaus	MS Psychology	Psychology	50 sem

Summary: - 23 terminal degree programs offered at 17 CSU campuses

- 13 MA/MS Psychology degrees in departments of Psychology, nine of which require 90 quarter or 60 semester units.
- 10 MA/MS Counseling degrees in departments of Education, Educational Psychology, Counselor Education, Counseling, & interdepartmentally with Sociology.

* Since this list was first presented to the program review committee, further research identified four additional programs not listed in the earlier document.