

El Mustang

CALIFORNIA STATE POLYTECHNIC COLLEGE

Vol. 8. No. 4

San Luis Obispo, California

September 25, 1947

Rally and Parade Mark Opening of Grid Season

By John Miller

A monster rally and parade through the streets of San Luis Obispo to whip up spirit for the opening of the home football season has been scheduled for Friday night, according to John Leslie, chairman of the rally committee.

The rally will begin at the parking lot across from the court house on the corner of Osos and Palm streets, and the band will head the procession through town where the students will serpentine in the streets.

The band will also be very much in evidence at the game, featuring the attraction of Betty Jo Bewley, Poly's star majorette.

Gil Brown and Jack Spaulding, veteran yell leaders, will be putting five new candidates for their jobs through the paces during the game. Trying out for yell leader positions are Harry Lum, Zack Ward, Dan Chalif, Gary Patterson, and Herb Robinson.

Lesley said that student body carl holders, wives, dates will be seated in the bleacher section on the east side of the field. Small sections of bleachers just inside the main gate will be reserved for Cal Tech rooters. Grandstand seats will be held for reserved ticket holders.

Expressing hopes for a large turnout, Brown requested that all freshmen wear dinks to the game in order to add color to the Poly rooting section. Cowbells and noise in general are expected to add to the show.



BETTY JO BEWLEY . . . National baton twirling champ during 1940-41, will furnish excitement and entertainment for the grandstand crowds during the coming pigskin season. This will mark Betty Jo's second season as baton twirler with the Poly band.

Excess of Cars Causes Campus Traffic Hazard

With an influx of student-operated automobiles creating a major traffic problem on the campus, El Mustang lists here a few basic "don'ts" which, if followed, will give everyone an easier way to go.

When you are faced with the necessity of parking your car, don't do it in front of doorways, in the wrong direction or, needless to say, on streets where parking is not allowed. Try to set your limousine down at least 15 feet from any hydrants or stop signs. Parking areas should be left only by the proper exits.

When driving on the campus, the same "don'ts" apply that make for good driving etiquette anywhere else. Speeding or passing on curves should not even need mention here. Regarding boulevard stop signs, they mean exactly what they say, in spite of what you might think after driving in Los Angeles. And for the help of anyone who might be confused, we are not in England where cars are driven on the left side of the street. This is America, and we use the right side over here.

Always caution your chauffeur to lock the car when you are going to leave it. Furthermore, it would probably be best in the long run to go and face the music when given a traffic citation. A final "don't" for drivers is not to take your car from dorm areas to parking lots.

If you are one of the peasants who doesn't own a car and are obliged to walk, be sure to stay on the side of the street where you will be facing oncoming traffic. It gives you more time to duck.

Here is a "do" that will help the situation: share a ride and aid in reducing traffic congestion.

Former Poly Student Awarded Homestead

By G. C. McMahan

Bob Carmen, on a recent weed survey for the U. S. Reclamation Service at Tule Lake, met Bill McClymonds, a former Cal Poly student who was found to be making a success of farming.

At the time Carmen met Bill, he was busy with a crew harvesting 70 acres of barley. He also had 70 acres of sugar beets ready for harvest.

McClymonds said that he was awarded a veterans allotment at the Minidoka division of the Boise project, Boise, Idaho. This allotment is in the form of a homestead and contains 140 acres of irrigated land. The homestead, according to Paul Dougherty, crops department head, is worth approximately \$20,000. Time spent by McClymonds in the army is counted on the period which must lapse before he gets clear title to the homestead.

S.A.C. Approves Tentative Budget for Coming Year

By John Patterson

A tentative budget totalling \$20,000 for Associated Student activities for the coming school year was approved Tuesday night by the Student Affairs Council.

The breakdown of the budget shows that Athletics will receive 44 per cent of the total, or \$8800. The general fund will take 16 per cent, \$3200. Publications is to get two dollars per active, full year membership for the publishing of El Redec, student yearbook. This will approximate \$8000, or 15 per cent. Music activities will draw 8 per cent, \$1600. Poly Royal receives 7 per cent, \$1400. The S. A. C. reserve (a buffer fund) and the Graduate manager will get 5 per cent each, or \$1000 for each fund.

John Jones, acting graduate manager, and Blick Wells, chairman of the budgeting committee, expressed their extreme gratification at the economical budgets submitted by each department in the face of severe financial retrenching.

Jones announced that of the money allotted approximately \$15,000 has already been collected. It was the opinion of the committee that the remainder of the budget could be met if students realized the value of purchasing cards.

The S. A. C. adopted a plan for the joint purchase of active and associate memberships on an installment basis by students and their wives. Each couple buying cards on this joint plan will pay \$11.25 down for a fall quarter active card and a fall quarter associate card (\$7.50 and \$3.75 each.) These couples may then pay \$5.65 before November 15 and another \$5.65 before December 1 to entitle them to a full year active card and a full year associate card. This plan was adopted to ease the strain on family budgets and still permit student activity and the obtaining of student benefits.

Vice president Don Seaton announced that students who have not yet been able to redeem promissory notes for membership cards should contact the student body office as soon as possible in order that adjustments can be attempted. He pointed out that a card would be necessary for admission to the Cal Tech game to be held on the campus Saturday.

(Continued on page 8)

The campus agency will be open during the following hours: Monday through Friday 11 a.m. to 1 p.m. and 4:30 to 6 p.m. The Camp SLO agency will be open during the following hours: Monday and Friday 7 p.m. to 9 p.m. Saturday 8 a.m. to 12 noon. Laundry and dry cleaning should be bundled securely in separate bundles.

The provided laundry and dry cleaning slips should be filled out completely with full name, address and all enclosed articles checked, and placed in the bundle.

AG. MAJORS ATTENTION

All students interested in agricultural teacher's credentials should contact C. Paul Winner, assistant dean in charge of admissions, guidance, and placement, in room 125, Adm. Building, at their earliest convenience.

This request is being made so that a check may be made of the number of students who are interested in such training.

California Future Farmers To Convene Here Next Week

Student leaders from more than 150 high schools will spend two days on the Cal Poly campus, Oct. 2-4, when the college is host to the 19th annual state convention of the Future Farmers of America. Enrollment at the convention is expected to number between 300 and 400 high school boys.

Housing facilities will be provided by putting up double-decked beds in the Hillcrest recreation hall and lounge. The general convention sessions will be in the engineering auditorium, and rooms will be made available for committee meetings, regional meetings and other activities.

Important items will be the selection and awarding of some 60 Master-Chapter certificates, consideration of about 140 applicants for State Farmer degrees, naming of a number of honorary State Farmers, announcement of Star Farmer awards and winners in the state-wide farm mechanics contest. Election of state officers for 1947-48 will be held.

Cal Poly has a direct interest in the convention, for the current state FFA president, Don Chambers of Chico, is a freshman agriculture student here as well as a frosh football aspirant; Don Halstead of Fresno, state vice-president, and Willoughby Houk, Dos Palos, state secretary, are both sophomores at the college.

The convention opens at noon on Thursday, October 2, although there will be an executive committee meeting in the morning. Students will arrive by train, plane, car, school and commercial buses. Boys from Sacramento valley points have chartered one large bus, and from the central region two buses. Chapters will send two official delegates, and State Farmer candidates.

The college band will provide music for a noon barbecue in the Poly Grove, October 3, and the Collegians will appear at a short award program Friday evening.

(Continued on page 8)

Steiner Will Conduct New First Aid Course

A first aid class carrying one unit of credit and meeting twice a week will commence Tuesday, September 23, under the direction of Ernest Steiner, campus security officer, in room 212 of the Administration building.

The course is being established to give student bus drivers an opportunity to obtain first aid certificates, which are mandatory under state law. Class sessions will be held from 6:30 to 8 p.m. on Tuesday and Thursday evenings. All student bus drivers are urged to attend.

ISSUE PARKING PERMIT

Starting Monday, September 29, parking stickers will be issued in the lobby of the Administration building. Monday through Friday from 12 noon to 1 p.m. Be sure to bring your car license number.

Clamlike Cal Tech Defies Probing Mustang Reporter

By George Tallman

"Go out and get that story on Cal Tech," the instructor said, with a light toss of his head, indicating that such a job consisted of merely picking the most fitting from the vast stacks of prepared releases of the life story and salient facts surrounding Cal Tech.

The story was supposed to be written on who, what, why and where about this brain factory facing the team on our lawn this Saturday. After groping around the library for about three hours, the sharp conclusion was reached that Cal Tech must frown on back-slapping.

A little was gleaned however: The "who" is President Lee A. DuBridge, able instructor, heading a faculty of 107; the "what," though remote, is the fact that Cal Tech was established for the promotion of Science, Engineering, and the Hu-

manities; the "where" can be covered by 31 buildings located on 38 acres in Pasadena.

While browsing through an old copy of California Bee Keeper and Needlework Monthly it was learned that modest Cal Tech blushes when anyone mentions the atom bomb, since they did a lot of the routine work involved in cooking it up. Their men built either the first or the largest, anyway the "somethingest" clytron for use in the study of nuclear physics. Their staff is studded with radio-active men who were either in New Mexico when the first bomb was fired, wrote home from Bikini or poked around Hiroshima.

What I'm trying to say is that these guys are sharp when it comes to science. In fact, it is rumored that they use chem. formulas for calling football signals. But we'll know more about that Saturday.

What's Doin'

- Thursday, September 25:
10:00 a.m.—Student Body meeting. Football field.
7:00 p.m.—Gamma Pi Delta meeting. Rm. 214 Adm.
7:00 p.m.—Ski club meeting. Rm. 213 Adm.
7:00 p.m.—Rifle club meeting. Rm. 211 Adm.
7:00 p.m.—Poly Engineers meeting. Rm. 212 Adm.
7:30 p.m.—Reserve Officers Association meeting. Rm. 203 Adm.
Friday, September 26:
7:30 p.m.—Rally in town.
Saturday, September 27:
8:00 p.m.—Football game. Poly vs. Cal Tech at Poly Field. After the game, a dance in Poly Gym.
Monday, September 29:
7:00 p.m.—Central Coast Counties meeting. Rm. 218 Adm.
Tuesday, September 30:
7:00 p.m.—Inter-varsity Fellowship meeting. Ag. Ed. 108.

Experiments in Perennial Pasture Planned By Carter

By Don Eley

Dr. Carter of the Soil Science department is planning experiments in perennial pasture this fall. Fifty-four acres surrounding the Sheep Unit and Air Strip are to be planted to Harding Grass and Birds-Foot Tree Foil. The fifty-four acres will be divided into four fields with the first ten acres being planted this fall. A rotation-deferred grazing system will be used and the acreage developed into a sheep pasture.

The first ten acres to be planted will be fertilized and mowed or clipped next summer to keep down weed growth and to better enable the plants to get established. Sheep will be put on the pasture as soon as the plants can stand grazing. The remaining acreage will be treated this fall to provide grazing during the winter and summer months and gradually seeded to the same grass and legume as the first ten acres.

"This program of seeding and managing of range land will provide an excellent opportunity for students to see the results in terms of actual yields of forage and also livestock production by tests and comparisons," said Dr. Carter.

"Results of this program should have wide application throughout the state in that we are dealing with soil and climatic conditions quite comparable to other areas."

"Complete execution of this program should result in excellent facilities for instructional purposes and should improve the general appearance of the entire layout of airport facilities and sheep range," Carter concluded.

M. C. Martinsen, of the Aeronautics department, is obtaining aerial photographs which are to be used in making maps and aiding in the general layout of the fields.

First Assembly Held As Rally for Cal Tech

The first assembly of the fall quarter was held this morning on the athletic field. It was opened with the playing of the Star Spangled Banner by the school band.

John Jones, acting student manager, said a few words about the student body cards bringing out the fact that those who have not already purchased cards, are urged to do so right away.

The assembly was arranged primarily as a football rally. Gil Brown announced that a night football rally would be held downtown on Sept. 26 at 7:30 p.m.

The band played arrangements and the student body was led in the singing of some of the college songs and organized yells. The assembly was concluded with the singing of the Alma Mater.

Farm Machinery Operates From New Installation

By Dick Simpson

In the new Farm Machinery building, which is almost completed, the Agricultural division has a central headquarters for all Poly farm operations.

The new building is of all steel construction with aluminum roofing and siding. In addition to the main area which is 180 by 120 feet, there is a wing 60 by 80 feet, giving a total floor space of 25,200 square feet. Included in the main area is a 20 by 40 foot section providing office space for Erle Campbell, farm superintendent, living quarters for two students, and a stock room for storage of small parts and tools. The lighting conditions are excellent and many doors provide ample access into the building for any type of farm machinery.

While the primary purpose of the unit is to provide space for storage and repair of all Poly farm equipment, at the present time all farm tractor and all farm machinery classes are being conducted in the building.

Servicing facilities installed include everything from fuel dispensing and lubrication equipment to necessary tools for complete engine overhaul.

Upon completion, which awaits only the final connecting of the drainage system and the installing of power transformers, the Ag. Engineering department will have one of the most complete farm shops in the state.

ENGINEERS MEETING SET

The Poly Engineers will meet Thursday, September 25, at 7 p.m. in room 212 of the Administration building to discuss plans for the forthcoming year. President Bob Adams stated that all mechanical engineering majors should attend, since the outlined program will be of interest to all men in that field. Former members are especially urged to be present, Adams said.

CAROL KING
ORIGINAL DRESSES
FOR JUNIORS-EXCLUSIVELY AT
LACTERMAN'S
728 HIGUERA PHONE 1285

Member
Cal Poly Alumni Assn.
Wilson Motors
— Specialists For —
Brakes • Wheel Alignment
Body, Fender and Painting.
We Buy and Sell
Used Cars.
1234 Broad St. Phone 116

Poly Poultry Scores Again In Egg Derby

By Herb Winn

Proof that the feather merchants can pick 'em was evidenced last month when Cal Poly's project pen of pullets placed third in an egg laying contest at Modesto. The competition included birds of all breeds from 35 of the nation's top breeders.

Poly's pen of 24 White Leghorns laid a total of 571 eggs for the month, with a profit above feed cost of 81 cents per bird. These birds are descended from a long line of contests winners. An intensive pedigree breeding program, which is carried on here at the Poultry unit under the direction of Dick Leach, provides "hens of distinction" for Poly graduates and F. F. A. home farm projects.

Poultry husbandry majors hatch and rear the chicks that ultimately participate in the contest. Preliminary selection for this year's entry of two pens including 52 birds was started last week.

Student project birds have been entered in each of the seven previous contests. The pullets have placed consistently high among the first ten for several years. It is with pride that the "merchants" display a 3-year certificate of excellence for the years 1941-1944. The 102 pullets entered those years won special distinction by producing an average of 232.2 eggs per hen per year with an income of \$4.43 per hen.

Ag. Engineering Society to Meet

A meeting of the California Polytechnic Society of Agricultural Engineers has been scheduled for 6:30 p.m. Thursday, October 1, in room 214 of the Administration building, to elect officers for the year and to ratify a new constitution for the group.

All agricultural engineering and agricultural mechanics students are urged to attend. Refreshments will be served at the close of the meeting. A special invitation is extended to freshmen interested.

- Records
- Music
- Instruments

BROWN'S
Music Store

717 Higuera Phone 1278

Collins
FOUNTAIN LUNCHES
Sandwiches—Malts
Mexican Dishes & Chili Beans
Sundries & Gift Items
7 A.M. to 10 P.M.
Daily and Sunday
341 HIGUERA ST.

PORTABLE TYPEWRITERS

Royal - Underwood - Remington - Corona
For Immediate Delivery

Monthly Payments
To Cal Poly Students and Ex-GI's
Typewriter Repairs - Rentals
Engineering Supplies
Technical Books

HILLS STATIONERY

OF COURSE

1127 Chorro St.

San Luis Obispo

Mustang Flying Club Opens New Membership Drive

By Ray Young

At a special open meeting held last Tuesday of the board of directors of the Mustang Flying association it was announced that club membership is once again available to the faculty, students, and qualified campus personnel. With both of their new L-4-J cubs ready for action club members are more eager than ever to transfer their operating headquarters from the county airport to the Cal Poly airstrip. Operations from the airstrip is anticipated as soon as the college authorities receive CAA authorization.

All members, associated members, and anyone else interested in the program offered by the college's flying club are urged to attend the first meeting to be held next Tuesday, September 30 at 7 p.m. in classroom 6.

Lonborg Class Plans Field Trip to South

A trip to the terminal market in Los Angeles to study vegetable marketing methods is being planned for the week end of October 17 by Reynold Lonborg's class in truck crops.

Stops are planned for the Santa Maria Valley, Santa Barbara, Oxnard, and the Western Growers and Shippers Association. In Santa Barbara the Bracker packing company will be visited, while in Oxnard the group is scheduled to view a frozen food cannery.

INTER-DENOM. MEETINGS

Dr. Essig, advisor of the Inter-Varsity Christian Fellowship, announced today that this group will meet every Tuesday at 7 p.m. in Ag. Ed. 102. This is an inter-denominational organization and all students interested are cordially invited to attend.

LET US
REPAIR
THOSE
SHOES



HERB'S
SHOE REPAIR

740 Higuera

Bug-Happy Ag. Inspectors Meet

By Ed Boettcher

It looks like a busy year for the Agricultural Inspection club, which held its first meeting of the year last Tuesday evening. Plans were laid for the club to sponsor a student body dance, and several parties also planned include a barbecue and possibly a hay ride. Officers of the club were elected with the following men taking office: Darrel Southwick, president; Jim Williams, vice-president; Cliff Marcus, secretary-treasurer; Ed Boettcher, reporter; Leo Vanderpool, SAC representative.

The club is looking forward to a successful year with plans being made to invite various persons who are authorities in their particular line of agriculture to speak to the club. Meetings will be held at 6:30 every Thursday evening. Frank Stevenson is the club advisor.

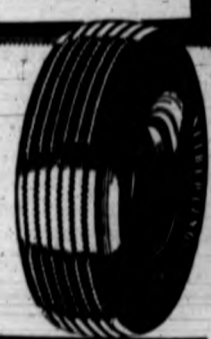
FORD
AUTHORIZED SALES and SERVICE
DEKE THRESH
1101 MONTEREY ST. PHONE 102

TED'S MOBIL SERVICE
Lubrication—Motor Tune-up
GRANATIZING
Everything for the Car
Pick up your Mobil touchdown tips
every week.
Marsh and Santa Rosa
Phone 2778

**MORE MILES
OF SERVICE...**

SEIBERLING
Tire Treading

PROMPT
SERVICE
FACTORY-
APPROVED
METHODS
QUALITY
MATERIALS
SATISFACTION
GUARANTEED



KIMBALL TIRE CO.
238 HIGUERA ST., SAN LUIS OBISPO
TELEPHONE 758

Expert Prescription Service

The Best in Cosmetics

Perfumes and Colognes.

WEISHAR'S
CITY PHARMACY

J. A. Weishar

850 Higuera St. Phone 112
San Luis Obispo, Calif.

"REST ASSURED"

HOTEL
WINEMAN

San Luis Obispo's
Newest Hotel.

R. E. Stevens, Manager.

Telephone 1800.

San Luis Obispo.

We have the laundry concession
with the campus.

Send your dry cleaning
with your laundry.
Dormitory Pick-Up.

— DELIVERY —

Ag. Ed. Bldg. Basement and
Adm. Bldg., Camp S.L.O.

HOME LAUNDRY
AND
CLEANING CO.

1323 Morro St.

San Luis Obispo

Phone 70

Brazilian Mission Studies Poly Plan

By Don Miller

Four Brazilian educators have enrolled in Poly as students. Poly's methods of teaching vocational agriculture courses are being studied by the four men, Werner Carner, Milton Monteiro, Lincoln Rodriguez, and Osiris Tolain.

These men are on a mission for their government to study vocational agriculture training as conducted in American colleges. They plan to stay at Poly for six weeks, and during this time make several field trips.

Before coming to Poly they spent part of the summer at Iowa State. When their mission is completed, many of the American methods of vocational agriculture training will be considered for adoption in Brazilian agricultural schools.

Los Lecheros Meet New Dairy Head

By Robert E. Dooley

George M. Drumm, dairy department head, got the first meeting of the Los Lecheros club underway last Thursday evening with a warm welcome for all students, both old and new. Drumm introduced Kenneth Boyle, new head of the dairy manufacturing department, who came to Poly from a Golden State manufacturing department in San Francisco. Prior to this Boyle spent several years in the dairy industry in Canada and served in the Royal Canadian Air Force after having graduated from the University of Minnesota.

Drumm then turned the meeting over to Roland Wenzel, Los Lecheros president. Other officers are: Walter Olson, vice-president and Frank Gibson, secretary-treasurer.

It was decided that club meetings would be held every other Wednesday at 7 p.m. in the engineering auditorium with the next meeting scheduled for Wednesday, October 1. At this meeting, Elmer N. Hansen, who spent 15 years in the dairy department at Iowa State college and is now in the dairy department here at Poly, will be the speaker.

Dairy Kept Busy By Demanding Campus Families

By Carter C. Camp

"Since the beginning of the fall quarter, almost all of the milk produced by Poly's dairy herd has been marketed on the campus," stated George M. Drumm, head of the dairy department. The large enrollment has brought more families, both student and faculty, to the campus. As a result, milk sales at the dairy have sharply increased.

Drumm also stated, "The dairy manufacturing students soon will be making ice cream, cottage cheese and other dairy by-products." Much of the ice cream to be made by these boys will be sold at El Corral. A quantity of milk produced on the campus is now being sold there daily.

Poly's herd last month produced 119,010 lbs. of milk and 5,159 lbs. of butterfat or 553 3/4 quarts of milk. This milk is Grade A and is pasteurized at the dairy.

The average production per cow per month is 1,169 lbs of milk and 50.8 lbs of butterfat. Individual high cows of the herd are Holstein No. 521, producing last month 2,517 lbs of milk and 77.2 lbs. of butterfat, and Guernsey No. 365, producing 1,263 lbs of milk and 63.7 lbs of butterfat.

Stanier
alfred dunhill

Personalized
Men's Toiletries

ANDERSON HOTEL BUILDING

Poly Student Drivers Meet

By W. John Scott

Approximately 100 drivers of school vehicles attended a meeting last Thursday at which J. F. Merson and James H. Carrington were the principle speakers.

Merson talked on the importance of accident insurance and the reporting of accidents. He also emphasized the need of all student drivers to use care while driving on and off the campus.

Carrington gave the drivers instructions on the filling out of vehicle request forms. He said that each operator of a school vehicle must fill out properly and sign a vehicle request form when taking out a vehicle. He also stated that no student would be allowed to drive a vehicle unless he has attended one of these meetings.

Driver's permits are issued for one term and when they have expired students are required to attend another meeting to renew their license.

San Luis Obispo 2705 Crescent Park Auto Court

One mile south of shopping district, highway 101.
San Luis Obispo, Cal.

Beautifully Landscaped Lawn with Flowers Front and Back.
Rt. 1, Box 10.
Karin and Albert Dawe.

THE HOUSE OF **Zegala's** FINE FURNITURE

840 MONTEREY ST.
San Luis Obispo

Poly Group Judges Displays at Paso

Stan Gray's Viticulture class journeyed to Paso Robles September 11 to take part in the Sixteenth Agricultural District Fair. Gray took part in the judging of the fruit and nut exhibits, and was assisted by the following students: Ronaldo Derico, Donald Day, Ray Garrett, Hubert Mathews, David Rose and Bill Aldrich.

The following Truck Crop majors also attended the fair Thursday, and assisted in judging the Truck Crop plate exhibits: Donald Grislingher, Harold Hilton, Robert Nixon, Jack Fleming, Clyde Downey, Floyd Lieser, Sam Matsushita, Lewis Bracker, Ted Laine, Howard Bracker, John Taylor, Lloyd Borland, and Stuart Porter.

Paul Dougherty and Ralph Vorhies of the Crops Department faculty accompanied the group and assisted in judging the grain and fruit exhibits.

Make It a Rule to Let **TAKEN'S** Do Your Shoe Repairing Repairing for All Types of Shoes
1027 Morro St. San Luis Obispo

True's Tailor Shop
CLEANING — REPAIRING ALTERATIONS
1030 Morro St. Phone 2807-J
San Luis Obispo, Calif.

Have Your Motor Tuned-Up at Corda & Warden

With the new "Sun"-Motor Analyzer and Stroboscope—the finest machine money can buy. Your car will run as it never has before.

CORDA AND WARDEN

Lincoln and Mercury Dealers
1131 Monterey Street

Grand Piano Arrives For Music Department

The music department was beaming with satisfaction this week, after acquiring a new Steinway Grand Piano in the music room. The piano, arriving from San Francisco Monday morning, is a very beautiful piece of furniture.

The music department now has two grand pianos, one of which can be used in the auditorium for any school programs or whenever shows are put on with outside talent. The new piano is a big help in expanding the facilities of the music department, said Harold Davidson, department head.

FROSH! GET YOUR HAND-BOOK!

Make the Little Woman Look Smart—

Buy Her a Pom Pom

To Wear At All of

Poly's Home Games

MISSION FLORISTS

965 Monterey Phone 432
ANDERSON HOTEL BUILDING

"Mother, Mother, Mother"

WHAT A RECORD! ★

BERYL DAVIS'S NEW DISC FOR RCA VICTOR

★ It's a groovy group of notes—done to a turn by one of the top of the new crop of singers.

Yes, Beryl Davis knows how to pick a tune... knows how to pick a cigarette too. "I tried many different brands and compared," says Beryl Davis—"I found Camels suit me best."

That's how millions learned from experience that there are big differences in cigarette quality. Try Camels in your "T-Zone" (Taste and Throat). Let your own experience tell you why more people are smoking Camels than ever before!



R. J. REYNOLDS TOBACCO CO.
Winston-Salem, N. C.

More people are smoking CAMELS than ever before!

Mustangs Meet Slipstick Squad Here Saturday Night

By Russ Pyle

The green and gold grid machine of Cal Poly will once more roll on home territory as it meets the invading Engineers of Cal Tech in Poly stadium Saturday night. Bearing scars and nursing Arizona sand-covered pride, the Mustangs will be out seeking revenge.

Playing their first home game of the year, the injury-riddled Mustangs will go into action minus several of their top linemen. Tabbed to watch the arc light tilt from the bench are, "Irish" Joe Griffin, Marsh Samuels, "Dutch" Van Harreveld, and Bob Croce.

Slated to fill the numerous gaps left in the front wall are Deane Anderson and Willoughby Houk at tackle, with Will Pryor holding down the vacancy at guard. Bert Innes and John Fitzgerald, who will play the game from behind a face mask will split the center duty. Ready to bolster the sagging line at anytime will be tackles George Clark and Jack Bolton, with Ron Hutchings and Bob Garver filling in at the guards.

Although losing several key linemen, the Mustangs have lost little sleep over their backfield. Back in action Saturday night will be Bob McCutcheon, swivel-hipped halfback from the local JC and Gene Pimentel, who will be out once more to set the turf afire with his broken field running.

Cal Tech coach Mason Anderson, gunning for a win in his initial game of the season, will send a squad of some 40 men onto the turf, including 18 returning lettermen from former years.

The Techmen's power house single-wing will have Don Baker, explosive runner and passer at right half; Glenn Chaffee, one of the top punters on the coast last year, at left half; Milt Strauss, who will call plays, at quarter; and Doug MacLean, 175 lb track star, at full.

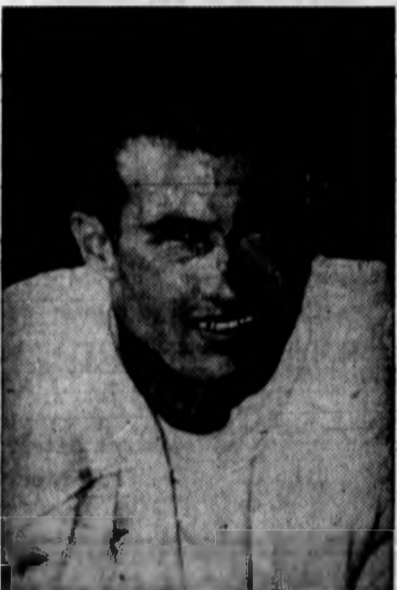
In front of his star-studded back field, Coach Anderson has seven men who will average well above 200 lbs from end to end. Heading the list of heavy weights are returning lettermen Ray Johrde, Manual "Tex" Bass and Dennis Long, all of whom tip the scales above the 200 point.

After watching his men in contact practice, Coach Anderson has announced the following probable lineup. Don Hibbard and Warren Marshall, both lettermen, at ends; Bob Walquist and Ray Johrde, lettermen, Craig Marks, also lettermen, at guards, and John Gerpholde, third year man, at center.

The back field will have Doug MacLean at full; Milt Strauss, second year man, at half; and serial artists, Glenn Chaffee and Don Baker at halves.



DEANE ANDERSON... "Andy" will see action as a tackle this season. He won his letter as an end, and was switched to center during the spring drills.



BOB MCCUTCHEON... A fast stepping halfback... on the ailing list last week, Bob is raring to go against Cal Tech.



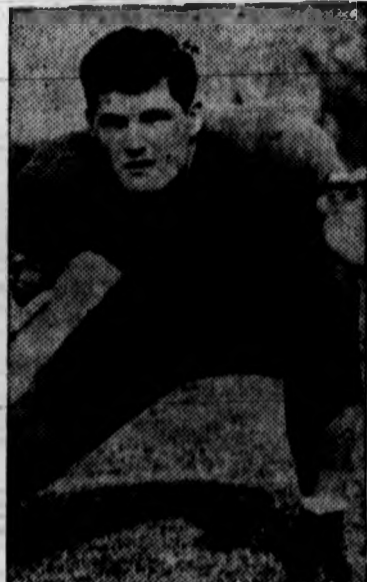
DOUG MACLEAN... Coach Anderson considered him his best player last year... MacLean taken over heavy duty at fullback.

Inside Info On Cal Tech

Here's the scoop on Cal Tech as it appeared in a recent issue of the Los Angeles Times:

"Coach Mason Anderson hopes his 1947 edition will keep rolling as well as the 1946 club started out, and not chill after the opening tussle. One thing certain, the Engineers can go no place but up—they wound up in the cellar last fall. In the backfield, Glenn Chaffee, outstanding punter and passer, will be at left half. Don Baker, a frosh last year and understudy to Chaffee, will spell him. Robert Funk will be back at right half. Doug MacLean, whom Anderson considered his best player last year, gets the fullback assignment. Bill Lanz and Milt Strauss fight for the quarterback spot. Line lettermen back include Dennis Long, 200-pound tackle; Robert Walquist, 220-pound tackle; Don Hibbard, 180-pound end; and Gerald McKenna, 175-pound center. Bill Muehlberger, second-string back last year, may be shifted to left end."

As this paper goes to press, there are no predictions circulating as to the outcome. The Mustangs are out to redeem themselves at the expense of the Engineers, and Coach Anderson's charges are up here to upset the appiecart.



BOB WALQUIST... 220-pounds of immovable muscle... the Mustang backs will have to run around him... a returning letterman.

Poly Swimming Pool Hours Announced

The Cal Poly swimming pool will be open every afternoon for free swimming. The bathing hours for students will be as follows: Monday, Wednesday, and Friday 2 to 3 and 8:45 to 4:30; Tuesday and Thursday 2 to 4:30; Saturday and Sunday 3 to 5:30. Wednesday and Sunday nights the pool will be open from 7:30 to 9 for the faculty, their wives and children, and students and their wives and children. All children must be accompanied by an adult.

Every afternoon Monday through Friday from 4:30 to 5:30 the water polo team will hold work-outs in the pool. Any man who has had any experience playing water polo is invited to try out for the team. San Jose State, College of the Pacific and Fullerton J. C., have been contacted and games are being arranged.

Poly Colts Knuckle To Salinas J.C.

By Russ Pyle

A badly shaken and sadly defeated Colt eleven staggered back into the shadows of its Alma Mater Saturday morning after bowing to Salinas JC 29-0 Friday night.

All the worse for wear, but all the wiser with experience, the Frosh came out of the 60 minute nightmare with four injuries and a better knowledge of how to play football.

"We were outplayed," stated Coach Carl Voltmer, "but we were not outplayed 29 points worth. If our pass defense had been stronger and the boys had shown a little more organization it would have been a different story," he concluded.

Voltmer's statement was backed up by the fact that Salinas made three of their tallies via the aerial route. Poly, on the other hand, all but matched the JC eleven in rushing but consistently bogged down or fumbled in scoring territory.

Although losing, the Colts, like every team, came up with outstanding performers. Included in the ranks of standout players were Paul Johnson, who kept the defense on its toes with his line plunging, Herb Spitzer and Stan Evers, who supplied the one-two punch for Poly's running and passing game, and linemen Don Chambers and Wayne Crosby, who did what they could against a stubborn Salinas line.

On defensive play it was tackle Tony Goularte and end Don Curry who earned most of the laurels for the linemen, but it was lightning fast Bob Dupuis, who really brought the spectators to their feet with his brilliant defensive work at halfback.

"Everything Good To Eat"

SNO

WHITE

CREAMERY



Delicious Sandwiches



Tasty Malts

"Drop In and Meet Us"

OPEN DAILY 6:30 AM TO 10:30PM

888 Monterey

MOTOR TUNE UP

COMPLETE BRAKE SERVICE

ALL MAKES OF CARS

GARRETT MOTORS

STUDEBAKER

Cars - Trucks .. Parts .. Service

1219 Monterey St.

Phone 2476

San Luis Obispo, Calif.

LUBRICATION

GAS and OIL

E. E. LONG PIANO CO.
Est. 1911

HOUSEHOLD APPLIANCES
777-779 Marsh St.

TNT HOBBY SHOP

THE BEST IN MODEL AND CRAFT SUPPLIES

—VISIT OUR TOY DEPARTMENT—

751 MARSH STREET

PHONE 2380-W

FOUNTAIN INN

Golf Driving Range

Open 7 Days a Week

Floodlighted

Balls now 25c a bucket

Daytime Play

COATS - DRESSES - SUITS

Hats—Blouses—Skirts—Slacks—Sweaters

To know what's new before you do actual shopping, please visit our store.

All that's new in fashion—for the fashion-minded women.

There's much ado about fabrics this season: new weaves, new patterns, new textures—over so pretty.

Kipper's

USE OUR LAYAWAY PLAN

853 Higuera

Phone 207

From The . . .
End-o The Line

By I Harry Endo
ECHOES FROM TEMPE . . .
The "spirited" Mustang, failed to materialize as a team last Saturday night. It was every man for himself, and divided they did fall—but hard. Judging from the rude facial massages our boys in the line received and their ineffectiveness defensively, the "Boston" block employed by the Arizona forward wall was brutally effective. (This so-called "Boston" block is the use of the fists and elbows in blinding defensive line-men.) Consensus of opinion, and you've heard a hundred versions by now, is that our team simply wasn't a team. Poor physical condition coupled with uncertainty about the plays were "big" minor contributing factors to the 33-6 drubbing. The chief and obvious reason for the disastrous showing, however, was a general mental (psychological) letdown.

STANDOUTS who managed to salvage what little prestige remained were: Shunro Nomura, dynamic "little" juggernaut, who sparkled defensively and offensively, and who also performed the decisive block which paved the way for our only score; "Spud" Meyers, veteran of many pre-war grid contests, was superlative out on one of the flanks; John Fitzgerald, despite stitches under one of his eyes, went back in for more undue punishment; Bob Cree, who proved he had the "stuff" to back up the line; Lee Roma, who broke away for Cal Poly's only score in the fourth period on a punt return.

CAL POLY vs CAL TECH . . . It will be O'Daniel's fast breaking "T" (revitalized) against a "technological" version of the single wing Saturday night. Coach Anderson's Engineers are too absorbed in their cyclotron to be concerned with the intricacies of a "T" formation. Slide rules and mathematical tables are SOP for the contest.)

SAN JOSE STATE, conference champs last year, exhibited a big line and a mighty fast backfield in their opener against San Francisco university. Despite a 20-6 loss, San Jose is still the team to beat in the 2C2A. The outfit destined to pull an upset is our own Cal Poly. (It says here.)

KEEPING TAB . . . Fresno state, our opponents on October 11, dropped their opener to Oklahoma City 27-21.

Arizona State Downs Poly Mustangs in Season Opener

Fired to the ears, the Sun Devils of Arizona State proceeded to ruin the Mustang grid machine from the opening kickoff. The Mustangs were bounced back on their hind quarters in the initial minutes of the contest and remained in that position for the remainder of the massacre.

Nothing went right either offensively or defensively for the Polymen as they ended up with a minus 17 yards for a total rushing net. Playing in a night temperature close to 90 degrees, poor physical conditioning was immediately apparent.

On the third play of the evening, Morrison Warren, 200 pound halfback and acting captain for the Sun Devils, ambled down the middle for 62 yards and a score. From this point on a continuous procession of O'Danielsmen limped on and off the field in a daze.

A smaller and younger Arizona forward wall knocked down the Mustang linemen as though they were duck pins. The forward wall, weakened by all too frequent replacement due to injuries, failed to stem the engulfing tide of Tempe's attack. Mustang backs were never given an opportunity to show their "stuff" because they rarely got their hands on the ball.

The one bright spot in an otherwise discouraging evening for Cal Poly was a 67 yard sprint by San Luis Obispo's Lee Rosa for the Mustangs' only score of the game. Standing on his own 33-yard line early in the fourth period, Rosa gathered in a booming Arizona punt and streaked for the sidelines, made a 90-degree turn and raced along the sidetrack untouched to the goal line.

NOMURA and MEYERS SPARKLE

A trace of the 'ole Mustang spirit was exhibited by two Poly standouts, Shunro Nomura and "Spud" Meyers. Nomura, diminutive fullback, drove for one of the two first downs scored by the Californians and was leading Mustang ground gainer with 15 yards net in two tries. "Ole Bones" Meyers, veteran end, was old man reliable himself as he slammed fast-stepping Sun Devils to the turf.



JOHN FITZGERALD . . . Veteran center . . . continued to play in the Tempe foray despite two stitches of bailing wire under his eye.

GRID POOL

As the "space-filler" for the week, the sports editor has graciously picked obvious winners for the weekend:

- CAL POLY over CAL TECH
- San Jose over Hawaiian All-Stars
- Whittier over San Francisco State
- Fresno over Mollili Bears of Hawaii
- College of Pacific over Willamette
- Iowa over U. C. L. A.
- Navy over California
- Minnesota over Washington University
- U. S. C. over Washington State
- Stanford over Idaho

Frosh Eleven Face Encounter Minus Backfield Ace

Chances for a Frosh grid victory narrowed today with the announcement that the Colt's ace backfield man will not play Saturday night against the Santa Cruz Legion gridders.

Coach Carl Voltmer stated today that Stan Evers, frosh halfback, was hurt in a motorcycle accident Sunday and will not be able to play in Santa Cruz.

Coaches Voltmer and Ed Jorgensen have been drilling the Coltmen this week to overcome the ragged offensive edges which prevailed when the frosh team lost to Salinas JC last Friday.

For the coming Santa Cruz game, the frosh line will average around 200 pounds while the backfield will edge an average of 180 pounds.

Probable starting lineup follows: Ends, Dave Martinez and Dave Faddis; tackles, Don Chambers and Tony Goularte; center, Ed Packard; quarterback, Eugene Seminario; halfbacks, Paul Johnson and Bob Dupuis; fullback, Herb Spitzer.

Soccer Introduced To Poly Campus

Soccer, the most popular sport in Latin America, is being introduced at Cal Poly. Several Latin American students have banded together with the idea of organizing active participation for all who may be interested. The first meeting was held last Tuesday afternoon and was followed with a short practice session by those in attendance.

Anyone interested in joining this group is cordially invited to do so. Further details may be obtained by contacting either Reinaldo Cardenas in room 67, Coronado Dormitory or Alberto Recinos in room three, Deuel Dormitory.

GOLFDOM

By Graham Tenbrook—Pro of the Atascadero County Club and Fountain Inn Golf Driving Range.

A strong response for golf in the college athletic programs is coming from the university's football and basketball stars and such men as Bill Daley and Billy Bye, Gopher grid stars, are especially eager to develop a sound golf game. These athletes recognize golf as an exacting sport which they can enjoy after their days of strenuous competition have passed.

Most young men and women do not have the money for private golf instruction, but a simple and inexpensive method of teaching classes, in groups, is being worked out at the Fountain Inn golf driving range which should be of immense value to the Cal Poly student.

Sport for Everyone—Starting this early teaching in golf technique will reduce the margin of error that discourages so many in golf. In years gone by golf was a rich man's pastime, but now the picture has changed and it is possible to find open courses nearly everywhere.

The high school and college years are when young people absorb golf instructions quickly. Bobby Jones was a champion at 14; Chick Evans was famous at 16; Francis Quimet upset Vardon and Ray to win the U. S. open when he was 18; and Sarazen won his first U. S. open when he was 19. Consider the advantages, therefore of getting your golf started early. Golf is a natural sport for the educational institutions.

Reasons for Growth:

- 1. It's bound to grow fast because: The students want it.
- 2. Most college sports coaches and athletic directors are golfers and are advancing the game.

BOOTH BROTHERS

DODGE and PLYMOUTH
-- DODGE TRUCKS --

San Luis Obispo, California

Incidentally...
it's a Bentley!

LOOK WHERE
YOU'RE GOING!

'N so does everyone else . . .
'cause the slim trim coach
men's back of June Bentley's
corduroy suit is plenty
neat. So's the slim straight
skirt . . . that's fashion
news. Butter Yellow,
Gulf Gray, Bisque or
Aquatone Tanager. Junior
Sizes 9-15.

\$14.95



WENDEL'S

Chorro & Higuera

Phone 162-W

FOUNTAIN INN RESTAURANT
HOME of FINE FOOD

Dancing Nightly 8:30 to 1:30
Except Monday.

Half Mile South on 101 Highway.
Phone 1090.

We have a complete
line of . . .

- BOOKS, STATIONERY SUPPLIES
- TOILET GOODS
- POLY SOUVENIRS
- MAGAZINE, CANDY, TOBACCO SUPPLIES

FOUNTAIN and LUNCH
SERVICE

EL CORRAL

STUDENT STORE
OPERATED FOR YOUR BENEFIT
Administration Building

FREMONT
Theatre

ONE WEEK 9-21 to 9-27
WELCOME STRANGER
WITH
BING CROSBY
BARRY FITZGERALD

STARTS Sun. Sept. 28
THE LONG NIGHT
WITH
H. Fonda B. Bel Geddes

OBISPO

Wed to Sat 9-24-9-27
NEWS HOUNDS
& BORN TO KILL

STARTS SUN SEPT. 28
NORTHWEST OUTPOST
& THUNDER BOLT

ELMO

FRI-SAT Sept 26-27
SAGE BRUSH TRAIL
& 3 Selected Shorts

El Mustang

CALIFORNIA STATE POLYTECHNIC COLLEGE

Published weekly during the school year except holidays and examination periods by the Associated Students, California State Polytechnic College, San Luis Obispo, California. The opinions expressed in this paper in signed editorials and articles are the views of the writers and do not necessarily represent the opinions of the staff, the views of the Associated Student Body, nor official opinion. Subscription price, \$3.00 per year, in advance. Editorial office, Room 16, Administration Building, Phone 2151.

EDITORIAL STAFF

Editor Paul Madge
Assistant Editor Don Johnson
News Editor Bob Crabbe
Sports Editor I. Harry Endo
Business Manager Emmons Blake
Advertising Manager Merv Chamberlain
Advertising Salesman John Colombini
Circulation Manager Donald Miller

Reporters

Everett Boles, Jr., Ed Boettcher, Carter Camp, James Carley, Watson Clawson, Don Chatters, George Ebat, Don Eley, Al Arf der Heide, Chester Kline, Jr., Eugene Kemper, George McMahan, Don Miller, Robert Olson, Phillip S. Pace, Russell Pyle, Robert Saunders, Dick Simpson, Joe Stecker, Wilbur Scott, George Tallman, Guy Thomas, Harold Thomas, Ted Wales, Herbert Wian, John Patterson, Leslie Crow, Jr., Dave Rose

Publications Adviser Robert E. Kennedy
Journalism Instructor John R. Healy

PRINTING DEPARTMENT

Director of Printing Dept. A. M. "Bert" Fellows
Printing Instructor Guy Culbertson

Student Printers

Emmons Blake, James Carley, Don Chatters, Phil Clawson, Eugene Kemper, Chester Kline, Don Miller, Robert Saunders, John Scott, Joe Stecker, George Tallman and Guy Thomas.

Friends In the Past-- Friends In the Future

California State Polytechnic college will be host October 2-4, as it has for the last 15 years, to the California Association of Future Farmers of America in its annual state convention.

This activity will bring to the overcrowded Cal Poly campus between 300 and 400 rural youth leaders from high school vocational agriculture classes, most of them presidents or other officers of their prep school Future Farmers of America chapters. The "chow" lines will be longer, the parking more congested. A few classes will have to be moved, and Poly students called upon for host service functions.

To those whose contact with this college — and this includes both faculty and students—is comparatively new, but who may wonder why this institution is not only willing but anxious to again provide meeting facilities for these young people, it is worth while to turn back the pages of our college history to 1933.

It may now seem incredible that in that year the total student enrollment at Cal Poly was less than 200, that in this depression year, taxpayers were urging the legislature to close the college; that short-sighted educators could see little need for such a vocational-technical program on a college level.

In this crisis, vocational agriculture and the Future Farmers of America led the fight, not only to retain the college but to make it great. Vo-ag administrators and high school agriculture teachers boosted the program, brought students, and helped fight the legislative battles. The statement that the college service "would help the Future Farmers," put over many an appropriation measure. Small successes led to more and better enrollment, wider acceptance, ultimately to national recognition and acclaim.

We have long memories. We know there will be some discomfort and disturbance during the FFA convention. But we can well afford it in remembrance of the "lean years." And there may be times again when the friendship and support of vocational agriculture and the Future Farmers of America will be a most valuable and necessary asset.

Switch List By Donald Miller

Each year almost 2000 people are killed in railway-highway grade crossing accidents. Twenty-seven out of every 100 cars run into the sides of trains.

This is not an astounding fact to railroad men, especially those working on trains that cross numerous streets.

Many of these accidents occur during the hours of darkness, but the greatest caution must be exercised between the hours of 2 a.m. and 6 a.m. when every man on the crew must be alert. It is during these hours that many motorists fall asleep. Persistent shouting is usually necessary to waken the sleeping driver. However, if the train crew fails to stop them, the side of the train does.

Then there is always the inebriated citizen on his way home from the local tavern. Crashing headlong into the train and being dragged 100 feet or so, he miraculously climbs from the shattered wreckage protesting he had the

right of way.

Another type of driver is the Indianapolis speedway variety. On the open streets at 3 in the morning this type loves to rev his car up to 90 plus. He is the only person on the street, so he thinks, and then looming up in his face is a box car. Too late— from now on he will be referred to in the past tense.

What is the solution? Do away with all railway-highway crossings? This would solve many problems, but the railroads do not have 25 billion dollars to carry on such a program. This figure is a conservative estimate advanced by the Association of American Railroads. Eventually many of the more dangerous crossings will be eliminated, possibly with the help of state and national financial aid.

As a plea to all drivers, practice caution when approaching railroad crossings. You will not only live longer but will save the train crew the trouble of filling out reams of accident reports.

Band Will Furnish Music and Stunts At Cal Tech Game

Cal Poly's band, complete with colorful uniforms and martial music, will make its first public appearance Saturday night when the Mustangs play the Cal Tech Engineers on the local gridiron. The band will play during the game and perform on the field during the half.

One of the highlights of the evening will be some snappy baton twirling by high stepping Betty Jo Bewley, snappy drum majorette for the band. Betty Jo is the wife of Lew Bewley, who plays end on the Poly team. In 1940 and 1941 she won the National Baton Twirling Championship held at Baylor University. She is well known by Poly students for her flaming baton act, performed last year.

The band will also play for the Pep Rally to be held Friday evening. The band this year will number about 50 musicians, with a well-balanced instrumentation.

STUDENTS' WIVES

By Cora Harris

Thursday evening, Sept. 18, the Student Wives club held a reception for wives of new students. Approximately 90 members attended the meeting at which Cecile Heald, president, presided. Officers and chairmen of standing committees for the autumn quarter were introduced: Jane Schultz, secretary; Ruth Arnold, treasurer; Barbara Carter, membership; Madolyn Hickman, hostess; Cora Harris, publicity. The vice-president had resigned, and a successor will be appointed by the executive board.

Local services and facilities available to students' wives were described. Jane Schultz explained the baby clinic which is held at Hilcrest Lounge the last Monday of each month. Ruth Arnold listed services available on the campus. The president told of church and educational opportunities in San Luis Obispo.

A social period led by Dorothy Mankin followed adjournment. Refreshments were served by Marjorie Grotzke and her committee.

The next club meeting will be held October 9, instead of the regular meeting date, because of the Future Farmer's Convention.

Magician Program To Be FFA Benefit

Cal Poly students and faculty members were today issued a special invitation to attend the San Luis Obispo FFA sponsored "Madcap Magic Review" Wednesday night, Oct. 1.

The invitation came from Art Godfrey, local FFA adviser, who explained that the proceeds from the Ralph Pierce two-hour magic show would be used to purchase much needed farm equipment for project work of the local FFA chapter.

Tickets, selling for 60 cents, will be on sale at the door, or may be purchased from Shirley Farrar, general office, Godfrey said.

Trial and Error

The following "boners" and picturesque phrases were submitted by Miss Ena Marston, English instructor, from her famous and vast collection of such. She will release more each week. Watch this column! You may make it.

I believe those that go to college will never regret it, even if they don't learn anything. How's that again?

Knowledge is so rare and so precious that it is had in great quantities by few people. Youse said it huh!

One of the most important things in the lives of everyone is marriage, especially to women. Yeah, but don't let it get around.

Then he murders the next heir and comes on the thrown himself. Many people don't like this. Nasty of them isn't it?

A selfish man with set ideas. Maybe he can't help it.

Philling-in with Phillip S. Pace

Elsewhere in this issue you will come across a column headed "Switch List" which is written by a spy from the Southern Pacific Railroad. It became apparent (so did I last Friday, but that is beside the point) that the student body was taking SP's, (referred to in Switch List as Good Old Southern Pacific) name in vain around here. So the public relations department hired this man for seven hundred dollars a week to say nice things about them.

What SP objected to was the fact that all tardiness excuses ran in a monotonous pattern. Any lad who was a few minutes late would snarl, "Da train held me up" at the instructor who would shrug and forgive, feeling no doubt that the situation was bigger than the both of them. Good old SP made a survey by taking the starting points of all men who were late and drawing a map showing exactly where they were at the exact hour class began, which point theoretically was a railroad crossing with a train on it. Somehow they reached the conclusion, if their facts were correct and the students truthful (never believing for an instant that they were not) that the SP was a railroad completely circling the campus just this side of the dorm with a total of eighty-two crossings, all occupied with stationary freights.

Naturally something had to be done. First they shifted the schedule of the "Daylight" so that it approached the school at three minutes of one and covered themselves in the event of a delay down south by having the one from Frisco reach the scene at five after. This not having the desired effect, they pulled one of their key men out and put him to work knocking out "Switch List."

Here they made their big mistake because the man had missed an SP train once and had very little to say that was printable about the line except, Good Old SP, Good Old SP, etc.

The latest hope of relief is to have Fireball Steiner place a hardy man with an upraised palm and a small whistle in the center of the tracks who will stop all trains BEFORE they reach the crossing allowing numerous men to reach classes while he argues with the engineer about the color of his stick. On second thought it might be best to use Freshmen for this task until after it has been thoroughly tried out.

Baptist Student Kick-Off Banquet

FRIDAY EVENING, SEPTEMBER 26

6:30 P.M.

PLEASE CALL 2425 or 2116 for RESERVATIONS

ALL BAPTIST STUDENTS AND FRIENDS INVITED

FIRST BAPTIST CHURCH

OSOS AND PACIFIC

WE SPECIALIZE IN PERSONALIZED STATIONERY AND CHRISTMAS CARDS

GIFTS FOR EVERY OCCASION:

- Vases ● Figurines ● Character Dolls
- Pictures ● Books ● Bibles
- Religious Mottos

The GIFT NOOK

1120 Chorro St.

Phone 2826

GO TO CHURCH SUNDAY

T
G R A C E
B
E R N
A C L E

Real Christian Fellowship
with young college men
and couples.

"Man can not live by bread
alone—but by every word
of God." Luke 4:4

MORNING WORSHIP - 11:00 a.m.

(Broadcast over KVEC)

SUNDAY SCHOOL - 9:45 a.m.

OSOS and PISMO Streets, SAN LUIS OBISPO

Talented Polyites Can Enter Tryouts For Variety Show

Poly students and wives with theatrical ambitions are eligible for parts in a musical variety show and three weeks of direction under a Broadway producer and stage-manager, providing they can qualify at auditions for "Flying High," according to Mrs. Murray C. Hathaway, president of the Monday club. Tryouts are being held at the Monday club on upper Monterey street during the remainder of the week for the show which will be produced October 8 and 9.

Charles Hibbitt-Blake, who had stage experience in the Broadway production, "Dead End," and who later toured Europe with the Ballet Russe, will direct the production and will be in charge of auditions. Since discharge from the Army, Hibbitt-Blake has been associated with several moving pictures, and has traveled throughout the country directing similar productions.

Schedule for the auditions is as follows:

Thursday night, at 7:30 for musical numbers.

Thursday at 4 p.m., chorus song and dance numbers.

Friday, 7:30 p.m., speciality acts, comic sketches and black-outs.

Dougherty Entertains Students with Films

Fifty crops students and their wives were entertained last Sunday at the home of Paul Dougherty, head of the crops department. The party was intended to acquaint the new students with Cal Poly and San Luis Obispo.

Colored movies of a past Poly Royal were shown. Informal talks were given on recreational opportunities for the local area.

Refreshments consisting of ice cream and cake were served.

Hobby Hall Space Available to Poly

By Merv Chamberlain

What does one do for recreation in San Luis Obispo? And if there is something to do, where can I do it?

Questions such as these have no doubt bounced around in the mind of every person coming to Poly. Just the other day, up bounced the answer—"City Recreation Center."

After talking to T. O. Olson, director of recreation at the city recreation center, I find that I can take model supplies to his craft room at 864 Santa Rosa street where work benches will

soon be set up to facilitate the building of light crafts and models in surroundings more conducive to creative expression. I can use the craft room on week days after 8:00 a.m. and evenings, and from 1:30 p.m. to 5:00 p.m. on Saturdays. There will also be space available to store models and supplies.

Of course, these facilities are available to you too—anyone interested in building models.

Special hours will be scheduled for benefit of teen-agers wishing to engage in the fascinating hobby

Craftsmen, Clubs

and pastime of model making, without interfering with adult activities.

The various clubs now using the facilities of the recreation center for meetings are a gem and mineral club, a railroad model club, a flying club, and a camera club. The craft room will be available to any other club that may be organized if there is sufficient time and space to meet future demands.

Dances are planned, at least one each month, to which Poly students are invited.

City Gem Society Invites Students

The San Luis Obispo Gem and Mineral society met Friday, September 19th, in the City Recreation Center penthouse. According to Mr. Gordon Bowser, president, the 'rock hounds' meet here every first and third Friday of each month to compare their rock finds, discuss future monthly field trips, and review current gem and mineral trends and techniques.

The most recent field trip was to Templeton early this month in search of a rare and odd formation of agate. Several of the 85 members found valuable pieces of beautiful banded agate.

Movies of Yellowstone National Park will be shown at the next meeting, Friday, October 3rd.

Football Program Goes to Press

By G. C. McMahan

The Goal Post, Cal Poly's football program for home games, is being prepared by the publications and printing department with Art Gandy, editor; Jim Coleman, circulation manager; Merv Chamberlain and John Columbini, advertising representatives.

There will be 2000 copies on sale at each of the 5 home games at a price of 15 cents per copy. The first issue will contain pictures of returning Cal Poly lettermen, Cal Tech lettermen, complete roster of both teams, and background information on coaches and squads.

Any student interested in selling the Goal Post, to earn a little extra cash, contact Jim Coleman, room 18, Adm. building. Profit made from sale of these programs will be used to defray the cost of sports publicity.

Radio Theater Group Open to Poly Actors

Men interested in radio play acting are invited to attend the next meeting of the Radio Theater to be held Monday night at 7 p.m. in the Junior high school library. It was announced today by Russell McHatton, adult evening high school instructor.

Actual production of radio plays over KVEC will be part of the class, according to McHatton.

"We have a dozen or so women already in the class but we need more men, as most of the plays have a preponderance of male parts," McHatton stated.

He added that student wives also would be welcome in the class.

An error becomes a mistake only when you refuse to correct it.

BARBER WORK

"AS YOU LIKE IT"

—at the—

Palace Barber Shop

1038 Chorro St.

Shoe Repairing

BURNET SHOE SHOP

1036 Chorro

IT'S FAVORITE BAKERY

for

• That Better Bread

• Danish Pastry

• Cookies

PIONEER

DRIVE IN MARKET

Marsh and Morro

Ph 1615

The Thrifty Fellow

CALLS a YELLOW

—:—

STEVE'S TAXI

Ph. 100 or 10-J

KEN'S

SHELL SERVICE

Complete Auto Service
Wheel Balancing

SHELL PRODUCTS

Complete Line of
Accessories

Monterey at Santa Rosa
Phone 1030

JOHN BORIACK MOTOR CO.

●●●●●

Kaiser-Frazer

Sales and Service

Best Equipped Shop
in Town.

1144 Monterey St. Ph. 1469

There is No Substitute for Quality

Jordan's Hardware

Builder's Hardware — Paints

Tools — Utensils — Crockery

Glassware

S. M. Jordan, Proprietor

Telephone 271 1033 Chorro Street
San Luis Obispo, California

PETTENDER'S

for

HAMBURGERS

1240 Monterey

BOB WALKER

TYPEWRITERS

Sales, Rentals, Repairs.
Remington Electric Shavers.
708 Marsh St. Ph. 681-W

MOVING PHONE 19

STORAGE DAY OR NIGHT

Sandcock Transfer Co.

All Cargoes Insured
Local and Long Distance Hauling.
Livestock Transportation.
737 Marsh St., San Luis Obispo

The Original MOTEL INN

- Excellent Dining Room.
- Dancing.

Harold Spillers, Manager.

At North City Limits.

Phone 1340.

SIGNAL OIL CO.



ERNIE SHREFFLER

Distributor

Cor. Garden and Marsh
Ph. 802, 1636-W

BEND'S
BATHING & BEACH STORES

BLANKETS SHEETS PILLOWS

1019 Morro St. San Luis Obispo

GOLDFISH PETS & SUPPLIES

HAZEL'S "PET HOUSE"

1629 Johnson Ave.
Phone 962-W

ROCK HOUNDS

See Our Display

- Lapidary Equipment
- Agate Jewelry

Porter's Lapidary

365 MARSH STREET

PARAMOUNT UPHOLSTERING SHOP

—Auto Seat Covers Made to Order—

HIGUERA AT PACIFIC

PHONE 2921-J

Your Credit Is Good At Ward's USE IT!

Remember, if we don't have it in the store, we'll order it from our new, big fall and winter catalog.

Credit Department in Mezzanine

We are ready and anxious to serve you

MONTGOMERY WARD

"THE BIGGEST STORE IN TOWN"

San Luis Obispo Phone 2310

The Shortest Way to SAVE! MONTEREY MARKET — FOR — All Your Food Needs

ON HIGHWAY 101 — MONTEREY ST.
Just North of the Underpass

- COLLEGE SUPPLIES
- ENGINEER'S SUPPLIES
- TECHNICAL BOOKS—
ALL SUBJECTS
- PORTABLE TYPEWRITERS
AVAILABLE NOW

HILLS STATIONERY
SINCE 1901
BOOKS - GREETING CARDS - TYPEWRITERS - OFFICE SUPPLIES - GIFTS
1107 MONTEREY STREET SAN LUIS OBISPO, CALIFORNIA

SAC APPROVES

(Continued from page 1)

day night. Students must also have cards to attend the dance being given after the game.

Benefits of Associate membership (available to student wives, faculty members and their immediate families, and to employees of the college) were adopted. Associate membership allows free admission to all inter-collegiate conference football games on the campus, to five basketball games, three boxing and wrestling meets, and all conference baseball games played on the campus. In addition there will be a special rate of admission for the Conference Spring Championships in track, tennis, swimming, and golf, a free copy each week of El Mustang, a reduced price as are Rodeo and special rates as are offered by the theatres and other merchants.

STATE FFA

(Continued from page 1)

After the latter program, the Future Farmers will have an opportunity to see the San Luis Obispo high school -Oxnard high football game on the college turf, at special rates.

The Cal Poly Young Farmers, working with their adviser, Carl Beck, who is also chairman of the host committee, will assist with many of the convention activities, including the barbecue. The auditorium will be decorated, and standards bearing the name of each chapter in the state will be placed between each two seats.

On Thursday evening the pool will be open from 7 to 9 o'clock at the same time, the gymnasium will be open for volleyball and other recreation, the El Corral games room and snack bar will be operated for the FFA, and the "School for Country Printers" will hold open house to permit the visitors to see their state magazine, the California Future Farmer, being published.

The convention closes Saturday noon, October 4, immediately after the election of new officers and their installation. Many of the visitors will be prospective future students, and will have many questions for present college students and faculty members. The visitors will wear delegate and other distinguishing badges, which should entitle them to every courtesy in the way of direction and assistance, according to the administration.

The college has been host to the FFA and to high school vocational agriculture teachers for more than 15 years. The state office of vocational agriculture administration is located here at the college, under the direction of the chief of the bureau, Byron J. McMahon, who is also state FFA adviser. President Julian A. McPhee was formerly bureau chief and state FFA adviser for many years up to 1944, when he became state director of vocational education.

He is wise who knows the sources of knowledge: who knows who has written what and where it is to be found.

BRISCO
HARDWARE

Housewares — Appliances
Sporting Goods
"Try Us First" 857 Monterey

TYPEWRITERS

Repairs and Sales
On All Makes



THE TYPEWRITER SHOP

1014 Court St.

Phone 127

Here's the one I'm
really glad to put
my name on ...
They Satisfy me

Joe DiMaggio



With the **KINGS OF SPORTS**
it's **CHESTERFIELD**

A B

Always Buy

CHESTERFIELD

**ALWAYS Milder
BETTER TASTING
COOLER SMOKING**

The Sum Total of Smoking Pleasure

