



News & Events

University News & Information

California Polytechnic State University, San Luis Obispo, California

Cal Poly Report - Feb. 17, 2010

News

SWE Bringing Hands-On Engineering to Local Elementary Students



Cal Poly students from the Society of Women Engineers (SWE) will visit local fourth-grade classrooms throughout the week. Volunteers from SWE are scheduled to visit schools in Atascadero, Morro Bay, Santa Maria, Grover Beach and Los Osos. At all the schools, the SWE members will lead fourth-grade students in hands-on science experiments and talk with them about engineering.

[More on fourth-grade engineering activities](#)

Cal Poly Releases New White Wine

The Cal Poly Wine and Viticulture Program has released a new wine: Mustang White, a blend of Pinot Blanc and Pinot Gris exhibiting the minerality and crispness of a European-style wine. Student winemakers produced 951 cases of the new blend using grapes grown in Arroyo Grande, Edna Valley and Santa Barbara County. The new Mustang White is available at Central Coast Wines and Cal Poly Downtown on Higuera Street in downtown San Luis Obispo.

[More on the new Mustang White](#)



Cal Poly Offers Low-Income Taxpayer Clinic Thanks to Grants

Financial grants from Chevron Corporation and the federal government have facilitated the creation of the Cal Poly Low-Income Taxpayer Clinic for residents of San Luis Obispo and northern Santa Barbara counties. The clinic, which began operating in February, assists taxpayers involved in controversies with the IRS and provides education and outreach services on the rights and responsibilities of U.S. taxpayers. The clinic will provide these services to low-income taxpayers at no charge in accordance with federal guidelines.

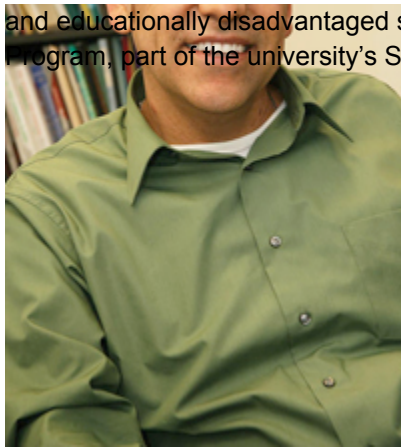
[More on the Low-Income Taxpayer Clinic](#)

Faculty and Staff



Engineering Announces New MEP Director

José Millán, the newly appointed director of Cal Poly's Multicultural Engineering Program, brings 20 years of experience working with low-income



and educationally disadvantaged students. As an academic supervisor since 2002 for the Education Opportunity Program, part of the university's Student Academic Services unit, Millán provided counseling for state-defined, disadvantaged students from their admission through graduation. Prior to joining Cal Poly, he provided services to local middle and high students as program coordinator for Upward Bound; worked as a program officer and guidance counselor for the Mathematics, Engineering, Science Achievement (MESA) Schools Program; and counseled at-risk students as an outreach consultant in the Santa Maria Joint Union High School District.

[More on Millán](#)

Retirement Reception for Kent Morrison Set for Feb. 25

Kent Morrison is retiring after 32 years of service to Cal Poly. The Mathematics Department invites the campus community to a reception in his honor Thursday, Feb. 25, from 3 to 5 p.m. in Fisher Science, Room 285. Kent joined the Math Department as a lecturer in fall 1977, accepted a tenure-track position in fall 1979 and served as chairman from September 1999 to August 2008. He will continue to teach part-time at Cal Poly and will be associated with the American Institute of Mathematics in Palo Alto as a visiting researcher.

Campus Announcements

Student Ombuds Services Established

The Office of Student Ombuds Services provides students with an informal, independent, impartial and confidential resource to assist in the resolution of university-related complaints or concerns. Ombuds staff members are committed to hearing about students' experiences, assisting them in understanding applicable university policies and procedures, and - as appropriate - helping them to informally resolve any university-related concerns. The staff adhere to the Code of Ethics and Standards of Practice of the [International Ombuds Association](#). Associate Ombuds Patricia Ponce normally will be available to see students in the Student Ombuds Services office (Kennedy Library, room 113) daily between 10 a.m. and noon or by appointment. Contact Ponce at pponce@calpoly.edu or ext. 6-1380. A [Web site](#) with more information is under construction.

Deadline for Student Research Competition Entries is Feb. 18

The Research and Graduate Programs office encourages faculty and staff members to notify students about the CSU Student Research Competition, to be held April 30 and May 1 at San Jose State University. Students may adapt their senior projects or master's theses for entry in the competition. The deadline to submit entries for Cal Poly's March 6 campuswide review is Feb. 18. For more information, visit <http://www.rgp.calpoly.edu/>.

Zimbra "Tips and Tricks" Forum Set for Feb. 24

ITS invites faculty and staff to attend a forum on Zimbra "tips and tricks" for e-mail and calendar from 10:30 to 11:30 a.m. Wednesday, Feb. 24, in the Business Building, Room 113. Content is based on specific feedback from academic and administrative units across campus and how Zimbra can help you be more productive. Questions and suggestions are welcome from all attendees.

Student Financial Aid and Scholarship Deadline is March 2

The Financial Aid Office asks faculty and staff to remind students that the Free Application for Federal Student Aid (FAFSA) deadline is March 2. To apply for federal aid, state aid and Cal Poly scholarships, students must complete the FAFSA every year. For questions, dial ext. 6-2927.

Events

Mystic and Feminist Author to Speak Thursday at Cal Poly

The Religious Studies program will feature local author, Jewish mystic and theologian Heather Mendel on Thursday, Feb. 18, at 7 p.m. in Philips Hall in the Performing Arts Center. The author will share her attempts to synthesize Judaism, feminism and spirituality in the search for God in a quantum age.

[To read more about Mendel's Lecture](#)

See 'The Vagina Monologues' This Weekend in the PAC

Quickly becoming a popular Cal Poly and San Luis Obispo tradition, the [Vagina Monologues](#) is an inspiring collection of women's stories. The annual Cal Poly shows feature local performers. This year's 'Monologues' will be in the Performing Arts Center Pavilion, Friday-Sunday, Feb. 19-21; showtime is 7:30 p.m.

[Details at www.pacslo.org](http://www.pacslo.org)



Cal Poly Music's 'Just Jazz' Concert is Feb. 20

Enjoy the annual 'Just Jazz' Concert at 8 p.m. Saturday, Feb. 20 in Harman Hall of the Performing Arts Center. Two big bands and two combos will demonstrate how jazz is being reinvigorated by a new next generation of musicians.

[More on the "Just Jazz" concert](#)

Campus Hosting Regional Gay, Lesbian Issues Conference This Weekend

Cal Poly's Pride Center will host the 20th annual Western Regional Lesbian, Gay, Bisexual, Transgender, Queer, Questioning, Intersex, Asexual, Ally (LGBTQIA) College Conference on Feb. 19-21. Organizers anticipate around 700 people attending from at least 17 universities. Students, faculty, staff, and community

members are welcome. This is the first time in its 20 years that the conference has been held at Cal Poly. The three-day conference will include workshops, lectures, roundtable discussions, and special events.

[Details on the conference](#)

Lerner & Loewe's 'Camelot' Coming to Cohan Center Monday

Cal Poly Arts presents "Camelot," the Broadway classic, Feb. 22 in the Cohan Center. Lerner and Loewe's timeless tale features such Broadway favorites as "If Ever I Would Leave You" and the endearing title song. Rediscover the grandeur of one of musical theatre's greatest and most compelling love stories. Pre-show lecture scheduled

[More on Camelot](#)

Job Vacancies

State Employment Opportunities

The official listing of staff and management vacancies is posted at <http://calpolyjobs.org>. To apply, go online and complete the application form. For assistance, call Human Resources at ext. 6-2236.

#101996 – Director for Agricultural Operations, Administrator II, College of Agriculture, Food and Environmental Sciences, Farm Operations, salary is commensurate with experience. Open until filled. Review begins March 5,

2010.

#102010 – EOP Academic Advisor/Supplemental Workshop Coordinator, Student Services Professional II, Student Affairs, Student Academic Services, \$3,519-\$5,002 per month. Open until filled. Review begins March 10, 2010.

Faculty Employment Opportunities

Candidates are asked to visit the online employment Web site at <http://calpolyjobs.org> to complete an application and apply for any of the positions shown below. Submit all requested application materials as attachments to your online application, unless otherwise specified in the ad.

#102002 – Part-Time Lecturer Pool, Chemistry & Biochemistry, Chemistry & Biochemistry Department, College of Science and Mathematics, ext. 6-2694. Closes: April 23, 2010.

#102011 – Part-Time Lecturer Pool, Kinesiology, Kinesiology Department, College of Science and Mathematics, ext. 6-2545. Closes: June 15, 2010.

#102012 – Full -Time Lecturer, Chemistry & Biochemistry, Chemistry & Biochemistry Department, College of Science and Mathematics, ext. 6-2694. Closes: March 19, 2010.

INTERNAL SEARCH – Current Cal Poly Employees Only

#101988 – Director, International Education and Programs, Administrator III. Academic Programs and Planning, ext. 6-2326. Review Begins: March 2, 2010.

Corporation Employment Opportunities

Cal Poly Corporation is a separate corporation operating in concert with the university to provide a diverse range of services and resources to students, faculty and staff. For an application, visit Human Resources in the Corporation Administration Building, check the Web site at <http://www.calpolycorporation.org> or call ext. 6-1121.

Administrative Program Assistant, Dairy Products Technology Center, \$17.16 - \$24.90/hour. This position will provide administrative and clerical duties for DPTC, including budget administration, purchasing, center promotion and communication, short courses and event planning. Requires high school degree or equivalent and four years office experience; BA degree may substitute for two years experience.

ASI Employment Opportunities

Candidates are asked to visit <http://www.asi.calpoly.edu> to complete an application and apply for positions listed below. For more information, contact the ASI Business Office in UU, Room 212 or call ext. 6-5800.

There are no new job openings this week.