

2018

## Woman Dressing in the Morning; The Passenger; Modesty

Danielle Sher

Follow this and additional works at: <https://digitalcommons.calpoly.edu/raw>



Part of the [Art and Design Commons](#)

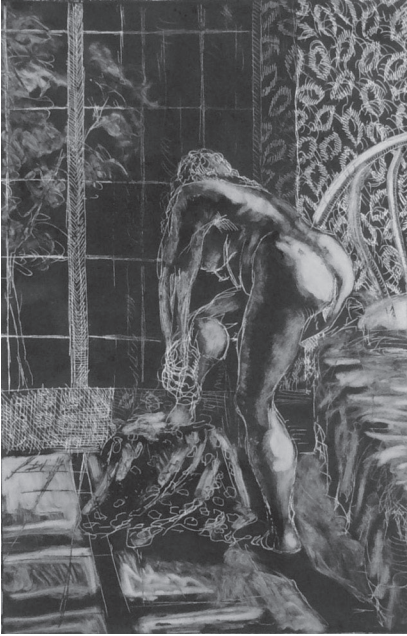
---

### Recommended Citation

Sher, Danielle (2018) "Woman Dressing in the Morning; The Passenger; Modesty," *.RAW Journal of Art and Design*: Vol. 3 : Iss. 2 , Article 11.

Available at: <https://digitalcommons.calpoly.edu/raw/vol3/iss2/11>

This Article is brought to you for free and open access by the Student Research at DigitalCommons@CalPoly. It has been accepted for inclusion in *.RAW Journal of Art and Design* by an authorized editor of DigitalCommons@CalPoly. For more information, please contact [digitalcommons@calpoly.edu](mailto:digitalcommons@calpoly.edu).



## WOMAN DRESSING IN THE MORNING

An etching, *Woman Dressing in the Morning* portrays a nude woman as she prepares herself for the day in the early morning. What she is doing today is getting her closer to where she wants to be tomorrow.



## THE PASSENGER

A digital painting, *The Passenger* explores a person's tired disposition during his travels. A life study of someone who seemed to be in a state of longing.



## MODESTY

An etching, *Modesty* is a piece that places a nude woman at the center. Her setting, age, and appearance are unknown to emphasize the title's theme. The artwork targets modern societal concepts of simplicity and modesty as its definitions seem to evolve to cater to the growth of sexuality.

Danielle Sher