

40s

■ **Mansfield L. Clinnick (AERO '47)** retired from Lawrence Livermore Lab in 1986. Previously he worked for 15 years at Lawrence Berkeley Lab. From 1960-67 he taught mathematics and computer programming at Cal Poly. Clinnick earned an M.A. in mathematics from UC Berkeley in 1955 and served as an artillery battery commander in the U.S. Marines in Korea in 1951. Today he lives in Shell Beach with his wife. Clinnick enjoys his hobby of astrophotography and has had more than 15 photos published in national magazines. ■ **Bates Bowers (ASCI '48)** is co-owner with his wife of BJB Computers, a computer system that processes the results of shows and competitions and prints checks from livestock auctions at county and state fairs. This is an after-retirement business — previously he was Kings County Fair manager in Hanford for 22 years. Bowers is in the Western Fairs Association Hall of Fame.

50s

■ **Albert J. Jorge (ME '50)** has been a retired engineer for the last 14-1/2 years. He lives in Morro Bay. ■ **Paul R. Peterson (OH '51)** is retired and living in Redding. His career has included work as a retail nursery manager, park superintendent, and landscape designer. His current interest is volunteer field editor of *Birds & Bloom Magazine*. ■ **Jack L. Albright (DSCI '52)** is a professor emeritus at Purdue University. His career in dairy husbandry includes teaching at Cal Poly, the University of Illinois, and Purdue. He was a Fulbright Scholar and served as a visiting professor in animal behavior and management to the New Zealand Department of Agriculture, the University of Reading (U.K.), the University of Illinois, the University of Arizona, and New Mexico State University. He lives in West Lafayette, Ind. ■ **Dee G. Meek (AGSC '54)** is semi-retired after owning a veterinary practice for 35 years and teaching several years as assistant professor at Washington State Veterinary College. Meek is renovating a 107-year-old seagoing tugboat and plans "to use her for extended cruising as well as just living on for several years." Meek lives in Richland, Wash. ■ **Joseph P. Franz (EE '55)** retired from General Electric Co. in 1987 and began the Wind

Energy Resource Development Co. in 1995 to develop commercial wind energy conversion systems for worldwide applications. He is currently developing wind turbine/generators for the Great Plains. He lives in Erie, Pa.

■ **Robert L. Stormont (EE '57)** retired in January after 37 years with Lockheed Martin Missiles & Space, where he was a senior staff engineer. His work took him to Denver, Baltimore, Seattle, and Sunnyvale. He now resides in Pleasanton. ■ **Ed Vink (DSCI '57)** is manager of the Kings County Dairy Herd Improvement Association, a non-profit organization in Hanford. He and his staff aid dairy farmers by testing milk batches for disease and bacteria. ■ **Mervyn C. Hoover Jr. (EE '58)** retired from the Department of the Navy in 1986 to work as a systems engineer at TRW in San Diego. He retired in 1995 and now lives in Escondido. ■ **Max E. Johnson (AGRI '59)** was recently honored as man of the year by the Cutler-Orosi Chamber of Commerce. He lives in Orosi.

60s

■ **Bertrand "Bud" Anderson (FM '60)** retired from the pistachio-processing business. He was widowed in 1987 and is remarrying this year. He lives in Modesto. ■ **David Bruner (MA '60)** is enjoying retirement after 31 years with Caltrans, renewing some of the shop skills he learned at Cal Poly and working on home projects. He lives in San Jose. ■ **Joseph W. Cotchett (ACRE '60)** was named one of the 100 most influential lawyers in America by the *National Law Journal*. A graduate of Hastings Law School, he was a Cal Poly commencement speaker and has been the recipient of numerous awards. ■ **John Lacey (ASCI '60)**, the first president of the National Cattlemen's Beef Association, and his wife, Dee, were recognized by the San Luis Obispo County Cattlemen and CattleWomen for their efforts in representing the beef industry for many

SUBMITTING CLASS NOTES INFO

We welcome news from alumni updating readers on jobs, appointments, moves, and special activities. Include your name — first, last (maiden) — address, phone, employer/position, major and year (if you did not graduate, list dates of attendance). Type or write legibly and mail your item to "Class Notes," *Cal Poly Magazine*, Heron Hall Room 204, Cal Poly, San Luis Obispo, CA 93407. Or contact us via e-mail at dp146@oasis.calpoly.edu. Note: Because of space constraints, we publish specific information on alumni only.

years. They were presented with an Assembly proclamation by Assemblyman Tom Bordonaro. ■ **Jon C. Plank (ASCI '60)** was elected to the board of supervisors for the city and county of Carson City, Nev., in November 1996. He retired in June 1997 after 32 years of service with the State of Nevada's Employment Security Department as chief of field direction and management. ■ **Jerry Miller (IE '61)** retired in 1994 after 33 years with the Department of Defense, where his last position was production engineering action officer in the Pentagon's Office of the Secretary of Defense. Miller and his wife live in Scottsdale, Ariz. ■ **Keith Thomson (EL '61)** is site manager for Intel Corp.'s 9,500 Oregon employees. He also serves as a commissioner for the Port of Portland, as chairman of the governor's task force for implementing school reform, and on the boards of the Portland Chamber of Commerce, Oregon Graduate Institute, and Electro Scientific Industries Inc. He has been married for 27 years. ■ **Dennis W. Riddle (AERO '62)** has been employed by NASA Ames since 1962, moving from work in transonic flow research to his present position as assistant branch chief for low-speed aerodynamics. He lives in Mountain View and is planning for retirement. His son, **Todd Riddle (MS AERO '90)**, is also a Cal Poly alum. ■ **Shirley O. Vernon (HE '62)** is a part-time instructor at Evergreen Valley College and teaches the TV course "Nutrition Pathways." She is also a buyer and salesperson for a specialty needle-art shop. She lives in San Jose. ■ **Gaylord S. McCool (ASCI '63, CERT '63)** has been working for the chief administrative office of the county of Los Angeles, maintaining a central space inventory of more than 8,000 facilities.

He is active in his church, sings in public performances, and is a past president of the Palos Verdes Peninsula Lions Club. He lives with his wife and daughter in Torrance.

■ **Malcolm P. MacCoy (ARCE '64)** is self-employed as a project consultant in architecture and engineering. He has been appointed to a six-year term as planning and zoning commissioner of his home town of Meridian, Idaho, has completed his second year as policy and technology co-chair for Ada County and the city of Boise, and is serving his second year on the Ada County Transportation Board. ■ **Neil Pew (PE '64)** has been a teacher and wrestling coach for more than 30 years (at Brawley, San Lorenzo, and James Logan high schools). He has coached numerous section champions and six California state champions, and was named C.I.F. North Coast Section coach of the year. ■ **Denis L. Moore (IT '65)** retired from Pacific Gas & Electric in 1993 and is currently doing volunteer work maintaining a five-channel TV translator and solar/wind-power system. He also maintains a two-way radio system for a volunteer fire and ambulance district, is active in the Lions Club, and is a director on the local water district board. He lives in Covelo. ■ **James J. Potter (ARCE '65)** is a researcher working with immigrant group demographics in Nebraska communities. An article on a rural project where he was the principal investigator appeared in the winter 1996 issue of *Nebraska*. He lives in Lincoln, Neb. ■ **Neil Rains (ARCH '65)** was hired by the city of Concord as a building inspector. Before his new assignment he supervised building plan examiners in Berkeley, served as the building official in Fresno, and was in private practice as an architect in Union City. ■ **Michael Singer (ME '65)** is a manufacturing engineer in the electrical harness assembly group at Space Systems/Loral in Palo Alto, a manufacturer of weather and communications satellites. He lives in San Jose. ■ **Jeffery S. Wilson (ARCH '65)** has been elected vice president of the Alaska chapter of the American Institute of Architects. He practices architecture in both California and Alaska, primarily designing residential projects. Wilson was a guest speaker,

on Arctic design, in the Cal Poly Architecture Department, and hopes to make this a regular part of his involvement in continuing education. He lives in Anchorage. ■ **Gretchen**

M. Bataille (ENGL '66, MA ED '67) was named provost and vice president for academic affairs at Washington State University. Previously she served as provost of the College of Letters and Science at UC Santa Barbara, associate dean for academic personnel in the Arizona State University College of Liberal Arts and Sciences, chair of the ASU Department of English, and associate dean of instruction at Cal Poly, Pomona. She also taught at Iowa State University. A scholar in Native American literature, Bataille is the author or co-author of 10 books, including most recently *Ethnic Studies in the United States*.

■ **Sharon Mylroie**, who studied home economics in 1966, is a design consultant with Dunn-Edwards Paint & Wallpaper in San Jose. She also teaches workshops in sponge painting, feather dusting, stenciling, decogaze block pressing, and faux painting. She lives in Sunnyvale. ■ **David J. Park (EL '66)** is a principal with Systems Research and Applications Corp. He lives in Fairfax, Va. His daughter, **Danita Park (ESB '96)**, has been commissioned a 2nd Lieutenant from ROTC. ■ **Richard L. Sturgeon (SOCS '68)** is CEO of California Gold Creamery in Petaluma. The creamery, which produces cheese, butter, and cream for ice cream, has annual revenues of \$485 million, is staffed by 283 employees, and is owned by its 354 farmer-members. ■ **Richard C. Johns (EL '69)** is executive director and CEO of the Middle Atlantic Section of the Professional Golfers' Association, overseeing the Virginia, Maryland, and Washington, D.C., areas. Previously he served as chief of staff of the U.S. Army Corps of Engineers, heading a staff of 40,000. He lives in Mason Neck, Va. ■ **Jane (Rones) Kampbell (SOCS '69)** is assistant superintendent at Fillmore Unified School District, where she has worked for 26 years. She and her husband, **George Kampbell (ABM '70)**, farm citrus in the Fillmore area, where they live with their two children. ■ **Duval M. Lemoine (FDSC '69)** is a self-

employed business owner in Reno, Nev. He would like to know "if some of the people graduating in '69 are close by — Hank Drabin, David Bolware — get in touch."

70s

■ **Bruce Anderson (AGRI '70)** is school superintendent for Crook County. He is married with three small children. ■ **Stan Busch (MA ED '70)** retired after teaching for 31 years, 28 of those years at Sierra High School. After teaching driver's training and physical education, he became a full-time counselor in the late 1970s. ■ **Fred Olivero (IT '70)** is the West Coast regional manager for Semasys. He lives with his wife and youngest son in Houston. ■ **Don Van Staaveren (FRSC '70)** has been appointed to the newly created post of vice president of production and winemaker at Codorniu Napa. Previously, he worked for 20 years at Chateau St. Jean. ■ **John Eskelin (CRP '72)** worked at the San Luis Obispo Planning Department, as a consultant in the Bay Area, and as the planning and historic district development manager for Park City, Utah. He completed his master's in urban planning and the urban design certificate program at the University of Washington, and is currently the downtown neighborhood planning project manager for the city of Seattle. ■ **William H. Jenkins (ASCI '72)** has been a park ranger for 24 years and works for Don Pedro Recreation Agency in La Grange. ■ **Les Waddel (PE '72)** earned his state chiropractic license and is a graduate of Palmer Chiropractic College West. ■ **E. Jean Boles-Orr (HE '73)** is the 1997-99 director of the Saratoga Chamber of Commerce board of directors. She is employed by Papier Mates in Saratoga and lives in Cupertino. ■ **Adele M. Bruno (HE '73)** is buyer of all Jaclyn Smith sportswear for K-Mart. She lives in Auburn Hills, Mich. ■ **Bunce Pierce (SOCS '73)** is president and CEO for Guardian Services, a security services firm in Los Angeles. Pierce lives in Huntington Harbour. ■ **Dan Withee (ARCH '73)** is partner in the Torrance-based architectural firm The Withee Malcolm Partnership, which specializes in residential, industrial, and commercial building in the South Bay area. Withee's firm won eight

architecture awards for its work on the Riviera Beach Colony Homes in Torrance, including a Gold Nugget award from the Pacific Coast Builders Conference. ■ **Kathy Henderson (MATH '74)** was one of two interim vice principals appointed at Sonoma Valley High School. She will work 60 percent of her time as interim vice principal and the other 40 percent teaching two math classes. ■ **Charles E. Thorne (ACRE '74)** was promoted to vice president of Parsons Asia-Pacific. He is responsible for all business development of process industries throughout Asia-Pacific. He resides in Pasadena. ■ **Don P. Weller (PE '74)** is a P.E. specialist at Sears Elementary School in Kenai, Alaska, the town where he has been teaching the past 16 years. ■ **Janice (McLaughlin) Arcias (PE '75)** runs a dairy with her husband, **James Arcias (DSCI '74)**, in Los Banos. The oldest of their five children enrolled at Cal Poly in 1996. ■ **Roberta Jorgensen (ARCH '75)** is the 1997 president of the American Institute of Architects, California Council. She is, along with **Janene Christopher (MA ARCH '85)**, a partner of Robbins Jorgensen Christopher, Architects, a firm with offices in Irvine and San Diego. ■ **Michael A. Krakower (ARCE '75)** is owner of Krakower & Associates Structural Engineers, which received design awards from the Los Angeles Conservancy and the California Preservation Foundation for the restoration of Angel's Flight Funicular Railroad in downtown L.A. He lives in Arcadia. ■ **Thomas E. Mitch (IE '75)** is an industrial engineer at the Naval Aviation Depot, North Island. He lives in San Diego. ■ **Albert A. Okuma (ARCH '75)** is an architect with Southern California Edison/Edison International, providing new construction consulting services in energy-efficient building design. In 1996 he was reappointed to concurrent four-year terms on the planning commission and design review committee of the city of San Buenaventura. He lives with his family in Ventura. ■ **Scott P. Plotkin (CRP '75)**, Cal Poly ASI president in 1974-75, is taking a leave of absence from his position as director of governmental affairs for the CSU system to accept an appointment as chief consultant and staff director to

the Senate Committee on Education in the California legislature. In this position he will provide advice, analysis, and guidance to the members of the committee and the state senate on all levels of education in California.

■ **Don C. Dildine (ARCH '76)** was promoted to vice president at Nadel Architects in Los Angeles. In addition to managing master specs and AutoCADD details, he's working on a six-story production support building with two sound stages for a major studio. About his 20-year reunion at Cal Poly last year, Dildine says, "Hard to believe it's been 20 years, but I was only eight when I graduated!" ■ **Brian Hackley (CSC '76)** is a network support engineer at Sun Microsystems in Chelmsford, Mass. In August 1996 he was honored for his customer service and teamwork at the Sun Service Top Achievement Recognition Summit. Hackley and his wife live in Lexington, Mass. ■ **Keith D. Jones (CRP '76)** graduated from the U.S. Army War College at Carlisle Barracks, Carlisle, Pa. He is a divisions operations officer with the 40th infantry division headquarters at the Armed Forces reserve center in Los Alamitos. ■ **Jeffrey T. Long (ARCH '76)** is president of Long & Associates, AIA, Inc. in Honolulu, Hawaii, a full-service firm specializing in custom residential, resort architecture, and interiors. He has designed more than 50 residences throughout Hawaii, Asia, and California, and received the BIA Renaissance 1996 Merit Award.

■ **Rebecca M. Sangalang (LS '76)** teaches first grade in the Poway Unified School District, where, she says, "My class size was just reduced to 20 and it's wonderful!" ■ **Eddie Stice (NRM '76)** entered the Peace Corps shortly after graduation and served as an environmental advisor to the government of Fiji. After 15 years as an educator/counselor, he went back into the Peace Corps to serve as country director for Fiji and Tuvalu. He is married with four children.

■ **Larry Young (BUS '76)** is division president of the Rancho Cucamonga-based Forecast Homes' Sacramento office. ■ **Randall M. Brem (TREN '77)** is vice president of sales at Berkeley Software Design Inc. in Gilroy. The company distributes UNIX-based internet software.

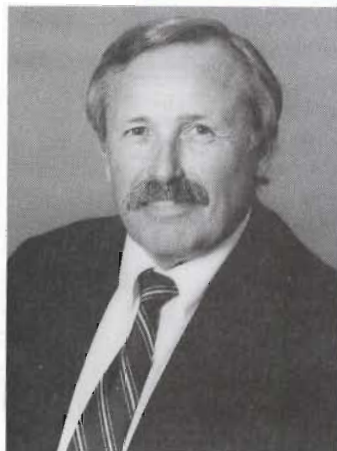
■ **Jonathan A. Dutra (EL '77)** was named field applications engineer of the year by Linear Technology Corp. in Milpitas. He lives in Saratoga.

■ **Bob Johnson (IA '77)** is dean of technology and engineering at Chabot College in Hayward. He also serves as an auto technology instructor.

■ **Randy Mysliviec (BUS '77)** is president and CEO of Cedalion Education Inc., a North Carolina-based company providing information technology training to Fortune 1000 companies. He was also named to the company's board of directors. He lives with his wife and two children in Raleigh, N.C. ■ **Peggy C. Papathakis (NSCI '77)** is a pediatric nutrition specialist at UC Davis Medical Center and serves as a media spokeswoman and professional practice chair of the California Dietetic Association, as well as treasurer of the Pediatric Nutrition Practice Group (ADA). She lives with her husband, **John Papathakis (AIRW '79)**, and their three children in El Dorado Hills. ■ **William T. Ryder (ET '77)** owns Ryder Engineering in Minneapolis, Minn. His company has applied for a patent on its electronic radius gauge and celebrated three years in business. ■ **Gertrude (Glick) Carey (ARCH '78)** operates The Carey Group Inc., Architects, Real Estate Brokers, and General Contractors, in Santa Barbara. The firm is currently the planners and architects for Sand Piper Golf Course in Goleta's proposed 161 new-home, golf-course redesign, and PGA clubhouse project. Carey lives in Santa Barbara. ■ **Marty (Grunditz) Fiorovich (ARCH '78)** and **Jon Fiorovich (CM '78)** are co-principals of the architecture and contracting firm Fiorovich Group in Watsonville. Recent projects include the Kimia (Monterey Mushrooms) corporate headquarters in Watsonville and "Above the Line," a facility for homeless teens in Santa Cruz County. Marty serves as a board member of the YWCA and is involved with Habitat for Humanity, and the couple enjoy teaching architecture and conducting workshops at local schools. ■ **William P. Fredrickson (BUS '78)** is the director of Ericsson Inc. in Lynchburg, Va., where he leads the company's U.S. public safety business. ■ **Kathy Herbst (FDSC '78)** was promoted

William Fenical (CHEM '63)

William Fenical dives to great depths, scans the ocean floors, and retrieves sea



agents as part of his job as professor and researcher at the Scripps Institution of Oceanography at the University of California at San Diego — all in the name of science.

"I'm here to teach graduate students how to use oceans as new medical

resources," says Fenical. "We search for marine creatures that might produce medically useful compounds for new potential drugs for specific diseases." Three areas in which Fenical's research is directed are most types of cancer, inflammatory diseases like arthritis, and viral diseases.

Fenical's research teams travel several times a year in groups of 10 to 20 using research vessels from the National Cancer Institute and rented boats to explore biodiverse marine life that inhibit the growth of cancer cells.

The process goes like this: Researchers collect marine life specimens, take them back to the lab, identify each of their properties, look at potential compounds, extract crude mixtures to measure their effects, then separate them, purify them, and conduct further testing for potential use on all kinds of cancer.

In 1991 Fenical led an expedition to the Philippines to prospect a cavern 100 feet under the sea. His team of researchers collected approximately two pounds of living material, and after further testing of its tissues discovered an unusual chemical that kills colon cancer cells. Unfortunately, a subsequent expedition found no further trace of the sea creatures. Today, chemists from the University of California at Santa Cruz are attempt-

ing to recreate the chemical artificially. Although this finding was a significant one, Fenical says, "We make much more important discoveries on a regular basis."

Fenical works closely with the American Cancer Society, and soon both parties will make an announcement about the discovery of a sea agent that has the potential to control breast and colon cancers. The compound, called Eleutherobin, contains a molecule that inhibits cancer cell growth. "It's very promising because it reacts with cells in a unique way," says Fenical. "Eleutherobin has already been licensed to Bristol-Myers Squibb Co. and is similar to the new cancer drug Taxol, an effective cancer drug used today."

Fenical wants to be clear: "I'm not here to make drugs — my job is to make discoveries." In April, he traveled to Papua New Guinea to develop a new collaborative program for exploring local marine organisms. "There's an enormous resource there," he says, "probably more diverse than anywhere in the world." The program includes an agreement not to incur any environmental damage to the area and to share patent royalties — something that is very equitable for the people of Papua New Guinea, says Fenical. "You see, the local villages own the reefs. The government is not very important there. This is good because the economic benefits go right to the people. There is no government squandering it away."

In looking back at his Cal Poly experience, Fenical says it was the practical lab training and the opportunity to be involved in showing off the department at functions like Open House that were most important. "My senior project provided me with the opportunity to do more creative things within the department," he says. "And, I was encouraged to go forward in my profession after receiving my bachelor's degree." **CP**

from territory manager to sales trainer with Nestle Clinical Nutrition, prompting a move from Newport Beach to Deerfield, Ill., with her three young daughters. ■ **Hampden S. "Denny" Jones (CRP '78)**, former senior planner with the city of Roseville, has been director of facilities development with the Roseville Joint Union High School District for the past five years, and has been selected to head the instructional technology program for the district. He lives in Granite Bay with his wife and four children. ■ **John M. Leehey (LA '78)** spent three years as a landscape architect in Saudi Arabia. He is now the manager for the planning department at Danielian Associates, a nationally known architecture and planning firm in Irvine. ■ **George P. Radanovich (AGB '78)** is a Republican representative for California's 19th congressional district (which includes the counties of Fresno, Madera, Mariposa, and Tulare). He is also president of the 74-member Republican freshman class of the 104th congress and the first vintner to serve in the U.S. Congress since the time of Thomas Jefferson. ■ **Rick Reichel (BUS '78)** is a captain with American Airlines and has retired from the Naval Reserves. He and his wife, **Sue (Rajala) Reichel (LS '79)**, live with their three children in Camarillo. ■ **Jonathan O. White (BUS '78)** is managing director of the San Francisco office of Spencer Stuart, the third-largest retained executive search firm in the world. After 15 years in the high-tech industry, he has spent the last five years finding senior executive officers for high-tech client organizations. He resides in Oakland with his wife and son. ■ **David R. Bartell (ET '79)** is a self-employed design and sales engineer with his own company, Advanced Food Technologies. He offers manufacturers cutting-edge technologies, including fuel-cell power plants "straight from NASA." Bartell lives in Bakersfield. ■ **Susan Luff Chritton**, who studied home economics at Cal Poly in 1979, is a career counselor for her business, Pathways, a career development company. She is also president-elect of the Junior League of Oakland-East Bay. Chritton is a resident of Lafayette and is married with four children. ■ **Mark G. Feathers (NRM '79)** has been work-

ing in the aerospace industry and is currently employed as a section chief/project engineer by United Technologies/USBI, a major supplier of space shuttle solid-rocket booster hardware. ■ **Rik Floyd (ECON '79)** is director of the San Diego industrial team for Sperry Van Ness. He has closed more than \$61 million in industrial building and business park transactions. He lives in Solano Beach. ■ **Vicki (Fisher) Janssen (PE '79)** married **Matt Janssen (NRM '93)** and has found herself "making a dramatic career change working in politics" as a manager for the Agricultural Task Force. Previously she worked for 12 years for the San Luis Obispo YMCA. The Janssens live in Atascadero. ■ **Ken Lindberg (CE '79)** was promoted to president of Power Engineering Contractors Inc. in Palo Alto. ■ **Ellen F. Solum (HE '79)** is a consulting dietitian providing food service and nutrition education services for senior centers and a convalescent hospital in Kern County. She also performs food safety and sanitation audits for Taco Bells in Kern County and Antelope Valley. She lives with her husband and two young children in Bakersfield. ■ **Keith D. Taylor (BUS '79)** is vice president/finance for Adecco Inc., the world's largest employment services company. He manages a \$1.1 billion U.S. division, providing finance and administrative support to a diverse variety of human resource companies.

80s

■ **S. Keith Belmont (CE '80)** is a commercial advisor working in international exploration for Mobil Oil. He was recently transferred to Dallas after working in England, Vietnam, Azerbaijan, and Turkmenistan. ■ **Steven J. Harris (IA '80)** is a senior administrative analyst in the customer support section of the finance and business services division of the Metropolitan Water District of Southern California. He lives with his wife and two sons in Burbank. ■ **John Love (ARCH '80)** has joined the staff of BWBR Architects in St. Paul, Minn. He has been living and working in the Twin Cities area for almost nine years. ■ **Amy L. Peck (GRC '80)** earned a master's in arts and consciousness from John F. Kennedy University in Orinda in June 1996. She resides in

Pleasant Hill. ■ **Dawn C. Schaniel (NSCI '80)** is an industrial hygienist for the state of California. She conducts occupational safety and health inspections. She is married to **Stephen E. Schaniel (MATH '79)**, a project manager for Hewlett-Packard. The couple lives in Los Gatos with their young daughter. ■ **Gayle P. Ackerman (CRP '81)** celebrated the birth of her twin son and daughter in October 1996. She lives with her family in Huntington Beach. ■ **Brenda L. Bowman (HE '81)** has been employed with Mars Hill Productions, a nonprofit Christian film/video production company, since 1989, first as an office manager and then in marketing/distribution. She lives in Houston. ■ **David Dahman (MCRO '81)** was appointed manager of quality assurance at Horizon Organic Dairy in Boulder, Colo., the nation's largest organic dairy. He previously worked as a food quality practitioner for 15 years with The Morningstar Group and California Coop Creamery. ■ **Gayle D. Gillfillan (AGB '81)** earned a master's in international management as a Sloan Fellow at the London Business School. She returned to California to rebuild her 12-year-old agricultural research consulting practice, focusing on long-term strategic planning. ■ **Michael Goett (AERO '81)** was promoted to major in the Air Force Reserve. He will be flying the B-737 for Delta after spending a year on the L-1011. Goett resides in Sandy, Utah. ■ **Cheryl (Harris) Kelling (ASCI '81)** has joined Webber/Nelson Realtors in Paso Robles as a realtor associate specializing in residential, ranch, and investment property. Previously she spent four years in mortgage lending and escrow services. She and her husband live in Atascadero. ■ **Robert J. Konigsberg (IT '81)** works for Baystone Software, a software start-up company. Previously he worked for 10 years at 3Com Corp. He lives in Los Gatos. ■ **Myron D. Maurer (CM '81)** is vice president in charge of operations and construction for Chicago's Merchandise Mart Properties, "the largest commercial office building in the world." He lives with his wife and two young sons in Elmhurst, Ill. ■ **Dan Morrow (EL '81, MS ENGR '83)** is a business and technology

instructor at Shasta College in Redding. He acts as a liaison between the college and the Shasta County Economic Development Council, which seeks to attract new business in the region, and works with SHASNET, a nonprofit, community-based group that provides community access to information and the Internet. He also serves as a faculty advisor for Shasta's Intervarsity Christian Fellowship and is on the board at Redding Christian School. He and his wife of 15 years have two daughters. ■ **Chris H. Sorensen**, who studied business at Cal Poly in the early '80s, is a manager for Wells Fargo Bank. He lives in Healdsburg. ■ **Peter Bowman (OH '82)** is branch manager of Four Seasons Landscape & Maintenance in Sacramento. He is also president and editor of the Sacramento Valley chapter of the California Landscape Contractors Association. Bowman lives with his wife and two young daughters in Elk Grove. ■ **Tracy (Jackson) Campbell (JOUR '82)** is director of marketing for Access Health Inc., a leading U.S. personal health management company. She and her family have relocated to Gold River. ■ **Barbara Cosio (NSCI '82)** is the director of nutrition support services for Resource Pharmaceutical Services in Anaheim. She lives with her husband in Pasadena. ■ **Paul W. Dooley (ARCH '82)** is a project director with KSL, where he oversees the PGA West residential construction. He and his wife, **Caroline (Fritzsche) Dooley (ARCH '82)**, live with their two children in Palm Desert. ■ **Sheila (O'Donnell) Miller (PE '82)** is a part-time Tupperware consultant who lives in Santa Maria with her husband and three young children. She plans to "get back into running" after winning first place in her division at the Arroyo Grande Strawberry Festival run. ■ **Kathy L. Sargent (AGB '82)** is assistant manager of the USDA farm service agency. She also is a Kings River-Hardwick School library volunteer and a five-year member of its Parent Booster Club. She is married with two children. ■ **Greta M. White (CSC '82)** is a software engineer with the Swiss company CENT Systems AG. Her home is in Suisun City, Calif. ■ **Mark Hudson (ME '83)** is a senior technical specialist for Northrop

Grumman in Dallas, Texas. He transferred there from the military B-2 division in Palmdale, where for nine years he was a liaison and materials and processes engineer, to Dallas and the commercial aircraft division. He is now moving to Chengdu, China, as part of the technical support team helping to build components for the Boeing 757. ■ **Brian R. Kramer (AERO '83)** is director of advanced technology development at the Eidetics Corporation, where his current projects include aircraft simulation with virtual reality and research in aircraft drag reduction and dynamic testing techniques. He lives with his wife in Redondo Beach. ■ **Bernadette Byrne (BIO '84)** was appointed director of marketing at McDowell Valley Vineyards. She will coordinate education and winery communication. Byrne serves as the executive director of the Mendocino Winegrowers Alliance. Previously, she worked at Fetzer Vineyards for nine years. ■ **Tony Caviglia (PE '84)** is head football coach and P.E. instructor at Chabot College in Hayward. He spent the previous eight years coaching football at USC, New Mexico State, Ohio State, and Purdue. Caviglia earned his master's in sports administration from USC in 1989. He and his wife, **Kristi (Heronemys) Caviglia (NSCI '86)**, have two young sons and live in Castro Valley. ■ **Debra Coleman (ARCH '84)** is an editor of *Architecture and Feminism* (Princeton Architectural Press). She lives in Fairfield, Conn., and works for Yale University as project manager for the \$85 million renovation of the Yale Law School. Coleman is also a partner with her husband in the architectural firm Coleman Graham Architects. ■ **Stephen Decker (ET '84)** was married in June 1996 and works as a senior manufacturing engineer for Santa Barbara Remote Sensing in Goleta. He and his wife live in Santa Maria. ■ **Steve Jacoby (LA '84)**, owner of Ono Design Group in Clovis, received the Einar Cook business award for landscape design of the Old Town streetscape project in Clovis. He and his wife have two children. ■ **Peter Kuykendall (AERO '84)** earned his MBA in May 1996 from Duke University's Fuqua School of Business. He works as a product mar-

keting manager in the original equipment manufacturing division of Trimble Navigation. He lives in Mountain View. ■ **Sheila (Foley) Larson (PE '84)** teaches P.E. at Niguel Hills Middle School in Laguna Niguel. She lives in Irvine. ■ **Richard A. Madsen Jr. (POLS '84)** is managing partner of the law firm Madsen & Wolch, L.L.P., in Walnut Creek. He and his wife, **Christy (Van Berkum) Madsen (ART '87)**, have two children and live in Danville. ■ **Bonnie Markoff (ASCI '84)** passed her veterinary specialty boards in 1996 and has been accepted as a diplomate. She earned her doctorate in veterinary medicine at UC Davis in 1988 and opened the Animal Care Clinic in San Luis Obispo the following year. Hers has been named one of 10 U.S. "Practices of Excellence." ■ **Richard Yuan**, who did graduate work in architecture at Cal Poly in 1984, was promoted to vice president at RTKL Associates Inc. in Los Angeles. He earned his bachelor of architecture degree from Tang Kang University in Taiwan and is a member of the American Institute of Architects. ■ **Mark Campbell (AGB '85)** resigned as Shasta District fair manager after 10 years. Prior to moving to Anderson, he was the director of facilities at the National Orange Show in Riverside. ■ **Janene Christopher (MA ARCH '85)** is one of seven members chosen for the San Diego Unified Port District Lindbergh Field's public art committee, which will enhance the airport with a facelift. She studied architecture at Paris' Ecole des Beaux Arts and has designed numerous public landscaping projects. Christopher has also served on the city of San Diego's Art in Public Places advisory committee. ■ **Robert Cochran (AGB '85)** displayed a black-and-white photography exhibition, "Valleyscapes," at the Tulare Historical Museum in March. After a short stint as a substitute teacher, Cochran has devoted his life to photography. "With my ag degree, I see things that others might not see in the landscape," he says. Cochran has had shows in New York, Washington, and the Midwest. He lives in Dinuba. ■ **Jay Colombini (AGB '85)** was promoted to manager of Farmers & Merchants Bank's Linden office. For

the past three years he was vice president and agricultural lending officer at the bank's Lodi office. Colombini is a member of Alpha Gamma Rho, the national agricultural fraternity alumni association, where he serves as chief financial officer and member of the board of directors. He and his wife have two children. ■ **Robert D. Flory (CM '85)** is a senior project manager with Vanir Construction Management Inc. in San Jose. He lives in Castro Valley. ■ **Jeffrey D. Gladstone (AE '85)** earned his master's and Ph.D. in civil engineering from UC Davis in 1989 and 1995, respectively. He has been employed with GenCorp Aerojet since 1985 and resides in Lincoln, Calif. ■ **John P. Patterson (LA '85)** is a project manager at Gillespie Design Group in San Diego. He and his wife had twins in August 1996, bringing the total number of their children to three, and bought their first house in February 1997. The family resides in Solana Beach. ■ **Michele L. Bailey (PE '86)** teaches college P.E. part time, and with her husband has started a home-based business in health and wellness called Body Wise International. "It is our passion," she says. She has a young son and lives with her family in Ojai. ■ **Cheryl H. Brunk (PE '86)** has worked as the field services director for the American Cancer Society in Modesto for the past few years. Her husband, **Kevin Brunk (ARCH '87)**, is an architect with RRM Design Group in Oakdale, where the couple reside with their two young children. ■ **Kim (Foster) Carlson (JOUR '86)** is weekend anchor/reporter for KGO Radio in San Francisco. She is married to **Michael Carlson (CE '87)**, a senior engineer for Contra Costa County. They have three children and live in Martinez. ■ **Maira Delumpa (ENGL '86)** is a supervisor for National University, working with student teachers, and the mother of four young children. She lives in Cupertino. ■ **Marianne Favro (JOUR '86)** anchors a one-hour newscast in the morning and a half-hour newscast at 11:30 a.m. for KNTV-TV in San Jose. Previously she worked as an anchor/reporter at KSBY-TV in San Luis Obispo. She lives in Campbell. ■ **Brian W. Gregory (EE '86)** is a staff project coordinator for National

Lawson Bush (HD '93, MA ED '94) has always known that he wanted to do something that would have a positive influence on people and society. He saw a particular need for each young black child to have access to an "education that teaches personal pride to help himself or herself and his or her com-

munity," he says.

Highly motivated to see his goal flourish, Bush created the Imani Academy, a school in Claremont that "strives to create a comfortable, safe, and familiar

environment where black students can critically explore who they are and what their purpose for being here may be," explains Bush. The name "Imani" means "faith" in Swahili, and was chosen because faith is what the school was founded upon.

In fact, Bush established the first Imani Academy while studying at Cal Poly in 1993 and 1994 on a football scholarship. For his senior project he studied independent black schools. And while earning his master's degree, he was involved in a teacher diversity project. The academy doors were open for a short six months in Cal Poly's education building.

Today the Imani Academy classroom averages 40 students — topping off at as many as 80 students — ranging in age from three to 17. It has been located on the Claremont College campus since

October 1994 and is run solely by a volunteer staff of nine, including Claremont graduate and former graduate students. "Because I grew up in Pomona, my family and I knew a lot of people," Bush says. "I visited my old elementary school, where they welcomed me to come in and recruit students for the academy."

The Imani Academy meets on the first three Saturdays of each month between October and May. The curriculum, co-designed by Garrett Duncan, a professor at Washington University in St. Louis, includes running and conditioning in the morning, followed by African history, literature, English, writing, and math. "Then we eat lunch. My mom cooks spaghetti and brings it over to the school," says Bush. The afternoon is spent practicing martial arts. "The goal is to bring together the mind, body, and soul," he says.

Bush admits that his desire to educate is a result of his service-oriented family. His father was the first black head football coach in the city of Pomona and now is a middle-school vice principal. Lawson's mother is a retired educator. And his three siblings have all sought education and public service positions.

"Teaching makes me feel good," Bush says. "I know I'm creating results when parents say that my school has improved their child's life. Many parents say their children never used to read or know anything about black history. I know I'm making a difference because these children get up early on a Saturday morning instead of sleeping in or watching cartoons."

Bush is studying for his Ph.D. at Claremont Graduate School and one day would like to own his own school and teach at the college level. "I want to teach teachers," he says. ☐

Renewable Energy Laboratory in Golden, Colo. He lives in Louisville, Colo. ■ **Christina Hester (MCRO '86)** is women's athletic director and women's basketball coach at Bethel College in St. Paul, Minn. She oversees eight women's sports. Previously, she taught seventh-grade life science in Robbinsdale, Minn. She lives in Minneapolis. ■ **Michael Mendes (AGB '86)** has been named president and CEO of the Stockton-based Diamond Walnut Growers Inc., the nation's largest walnut processor. He has directed the company's international sales program since 1991 as manager and later vice president of international and industrial sales and marketing. Previously he was international marketing and sales manager for Dole Food Division and an international marketing consultant/manager for the California Department of Food and Agriculture's international marketing program. He was student body president at Cal Poly and after graduating went on to earn a master's in business administration from UCLA.

■ **Charles B. Muttillio (CM '86)** was promoted to vice president at the Santa Monica-based firm of Morley Builders, the parent company of Morley Construction Company and Benchmark Contractors Inc. In his new position he is responsible for the direction of all business development and marketing activity. A graduate of The Executive Program in Management at UCLA's John E. Anderson Graduate School of Management, Muttillio worked at Morley in estimating and project engineering, progressing to major construction management in the Los Angeles area. He is currently vice-president/president-elect of the Architectural Guild at USC and is active in the Los Angeles Headquarters Association, the Westside Urban Forum, and the Valley Development Forum. He lives in Northridge with his wife and two daughters. ■ **Sam Nunes (ARCH '86)** was appointed a partner in Gordon H Chong & Partners in San Francisco. He joined the firm in 1985, and was appointed principal in 1993. Nunes is a member of the San Francisco chapter of the American Institute of Architects, the Urban Land Institute, the League of California Cities, and the California Public Parking Association. ■ **Roger F. Reedy**



(ENGL '86) was promoted to director of sales of the Golden West division of Barrett Business Services, a staffing employment service in Santa Clara. He lives in Fremont. ■ **James A. Zion (AGB '86)** is director of marketing and sales with Apcal Inc. in Visalia, a diversified grower and processor of almonds, walnuts, and pistachios. He lives in Clovis. ■ **Marnette L. Atkinson (EL '87)** is a product manager for Hyperion Software in Foster City. She has a young son and lives in Menlo Park. ■ **Michael Burger (AGB '87)** works at Bruce Beaudoin and Associates and completed the requirement for the Appraisal Institute's distinguished member professional designation, indicating advanced expertise and experience in the evaluation of commercial, industrial, and residential properties. Burger is a state-certified general real estate appraiser, vice president for the Bakersfield chapter of the Appraisal Institute, and secretary of the Active 20-30 Club. He lives in Bakersfield with his wife and two children. ■ **Brian D. Carstens (CSC '87)** is a senior software engineer at Comstream Corp. in San Diego. He has traveled to Bogota, Columbia, to install network management software for satellite modems. Previously he was a software engineer at Applied Signal Technology in Sunnyvale. He lives in Carlsbad. ■ **Dave Howard (MA ED '87)** is administrative assistant and coordinator of the undergraduate program at Chapman College in Modesto. He formerly worked for Chapman at its Vandenberg Air Force Base and Ontario centers. ■ **Joseph I. Mendonca (CRSC '87)** is an agronomist with the J. G. Boswell Co. in Corcoran. He lives with his wife and three children in Hanford. ■ **Steven C. Merrihew (AERO '87)** earned his Ph.D. in aeronautics and astronautics from Stanford University in 1996. He and his wife and young son live in East Palo Alto. ■ **Tracy Peterson (ENGL '87)** was promoted to shareholder at The Windward Group, a software development, documentation, and quality assurance consultancy. She directs the activities of the documentation division, based in its Los Gatos office. ■ **Kenneth J. Trigueiro (ABG '87)** is a senior manager of finance and administration for Cilker

Orchards. He is employed by **Bill Cilker Jr. (AGB '71)** and **Carl Cilker (AGB '75)**, and lives in San Jose with his wife and two young children. ■ **Christine (Wickey) Anderson (LA '88)** and **Greg Hauser (LA '88)** have been named associates at the Sacramento-based The HLA Group, Landscape Architects and Planners Inc. ■ **Margaret Boggs (BUS '88)** is executive director of the faculty practice plan for the Emory University School of Medicine in Atlanta. She lives in Norcross, Ga. ■ **Brian K. Bucher**, who studied architecture in 1988, opened his own architectural design office in Colorado Springs, Colo. He is licensed in California and Colorado and practices in both states. He lives with his wife, **Madeleine (Ostertag) Bucher (BUS '88)**, and their three children in Colorado Springs. ■ **James M. Freitas Jr. (AERO '88)** works for Boeing Co., where he recently completed the preliminary design of the 757-300 aircraft. He is "still having fun discovering the Pacific Northwest" with his wife and two daughters. The family lives in Renton, Wash. ■ **Lisa M. Holder (PE '88)** is the director of health improvement for Pacificare Health Systems, a for-profit managed-care organization. After graduating from Cal Poly, she earned a graduate degree in exercise physiology from San Diego State. She is currently working full time and going to school part time toward her MBA. She lives in Lake Forest. ■ **Michael McRae (ET '88)** works as an application engineer for Comair Rotron, a fan and blower manufacturer in San Ysidro. He lives in Cardiff. ■ **Garner M. Moss (ART '88)** is senior partner and creative director for Impact Media Group in San Francisco. He has designed Web sites for Kodak, Sun Microsystems, and the Los Angeles Kings Hockey Club, and has received many awards in the last five years. He married in 1996 and lives in Redwood City. ■ **Tracy Van Camp-Scovil (JOUR '88)** earned an M.A. in English from the University of Dayton. She teaches journalism and is the faculty advisor for the student newspaper at Allan Hancock College in Santa Maria. Her husband is attending Cal Poly to earn a graduate degree in computer science. ■ **Michael O. Wendtland (CE '88)** opened his own

law office in Pasadena in January to handle immigration matters, personal injuries, traffic accidents, and commercial matters. He is married and lives in South Pasadena with his award-winning Burmese cats. ■ **Richard Whealan (ARCH '88)** is a project manager with The Miller/Hull Partnership in Seattle, where he lives with his wife and "is enjoying life in the Great Northwest." ■ **Laura (Murphy) Clarke (IT '89)** works with re-engineering the retail business supply chain of American Stores Co. in Salt Lake City, the "second-largest food and drugstore retailer in the nation." In 1996 she completed an executive MBA degree at Saint Mary's, Moraga, left Pacific Gas & Electric after seven years, and moved to Salt Lake City, where she purchased a house and was married. ■ **Richard L. Clark (SS '89)** is a senior scientist with Law/Crandall in Los Angeles. He lives with his wife and three children in La Verne. ■ **Ness Hamaoui (CM '89)** joined the Los Angeles office of Julien L. Studley Inc. as an assistant director. He has completed master's level coursework in finance and real estate development. ■ **Brian Lottman (EL '89)** is on academic leave from Lockheed Martin and is a research assistant at the University of Colorado in Boulder, where he is pursuing a Ph.D. in electrical engineering/LIDAR remote sensing. He lives with his wife and young son in Longmont, Colo. ■ **Jack McLaughlin (LS '89)** earned his Ph.D. in educational administration at Columbia University in 1996. He is employed by the Santa Cruz County Office of Education as an administrator of projects and curriculum. He is married with one child. ■ **Tim Schulze (ARCH '89)** is a partner at Pacific Cornerstone Architects in San Diego. He and his wife have two children and live in Carmel Mountain Ranch. ■ **Joseph L. Smith (ARCH '89)** is a junior partner at Architecture Plus Inc. in Modesto. ■ **Jason Treanor (BUS '89)** is a P.E. teacher at Sierra Sands James Monroe Middle School in Ridgecrest, where he lives with his daughter. He coaches eighth-grade basketball and helps coach girls' varsity soccer. ■ **Mark White (BUS '89)** earned his MBA in international management from the University of Dallas in 1993. He works as interna-

tional account manager for a Japanese-owned company in Tijuana, Mexico, and has traveled in Mexico and the States, as well as many parts of Asia. He lives in San Diego. ■ **Robert P. Wingo (IT '89)** is a senior facilities manager with Altera Corporation. He lives with his wife and two children in San Jose.

90s

■ **Julianna (Bridges) Anderson (SOCS '90)** is an office manager at Materia Ventures Associates, a venture capital partnership. Her husband, **Clay Anderson (EL '91)**, works for the Boeing Co. as a flight test engineer. His current project is the next version of the 737. The couple live in Seattle. ■ **Catherine (Erhard) Battin (PE '90)** was married in May in Manhattan Beach, where she now lives with her husband. She is a teacher on the Palos Verdes Peninsula. ■ **Stephanie A. Bouquet (NSCI '90)** and her husband, **Matt Bouquet (ET '89)**, recently bought a new home in Walnut Creek, where they live with their young son. Matt works for the Bay Area construction company of Adams and Smith Inc., where he is project manager/engineer for a large seismic retrofit project on the central viaduct freeway. ■ **Fern Cobian (ARCE '90)** is a project engineer at Barry Levin & Associates, the major engineering firm for Home Depot. He is starting a group of medieval bagpipers and lives in Yorba Linda with his wife. ■ **Dean L. Gatons (BUS '90)** earned an M.S. in healthcare management from Cal State L.A. in 1992. He is an area account manager with Wyeth-Ayerst. Gatons was married in December 1996 and lives in Highland. ■ **Stephanie Jones (ASCI '90)** is a full-service securities broker with Royal Alliance Associates Inc. in Glendora. She lives in San Dimas. ■ **Jane Morton (PE '90)** is a registered cardiac sonographer at Santa Barbara Medical Foundation Clinic. Previously she worked for two years at a large North Carolina hospital. She lives in Goleta. ■ **Danny Polidi (EL '90, MS ELEE '91)** is a project engineer with Radian Technology in Santa Clara, where he is involved in the development and design of a fast-locking synthesizer. Past accomplishments include work on several communications satellites and publication of a

paper in *RF Design* on design methods for a dielectric resonating oscillator. He lives with his wife, **Johnna M. (Hensley) Polidi (ENGL '90)**, in San Jose. ■ **Cheryle V. Robinson (NSCI '90)** has been working in Orange in the technical services department of D & F Industries, a company that manufactures dietary supplements, while earning her M.S. in nutritional science from Long Beach State. She and her husband live in Costa Mesa. ■ **Yumi Sera (JOUR '90)** was promoted to senior account executive at Hahn Communications in Lake Forest, specializing in media relations, publicity, advertising, writing, and special events coordination for numerous clients. Sera previously worked for Mary Homi International Public Relations in Newport Beach, and taught English in Hiroshima, Japan, for Time T.I. Communications, a subsidiary of Time Life Inc. ■ **Gregory J. Spicer (ECON '90)** is a regional sales representative with Kirk Paper Company in Downey. He lives in Huntington Beach. ■ **Bradford T. Bishop (ARCE '91)** was awarded his professional engineering license from the state of Florida and is a structural engineer for Sverdrup, where he is a group leader for the Publix supermarket renovation program throughout the Southeast. ■ **Susan D. Cave (BUS '91)** is an internal accounts supervisor for Pyxis (Cardinal Health), an industry leader in health care automation. She was married in June. ■ **Thomas M. Cook (BUS '91)** is tax manager at Netrom On-Line Communication Services Inc. in San Jose. He and his wife, **Tiffany J. Cook (BUS '91)**, live in Morgan Hill. ■ **Rose DePalma (MATH '91)** teaches math at Sonoma Valley High School. ■ **Susan L. Jenkins (BUS '91)** joined the Marine Corps in June 1994 and is a Marine 1st Lieutenant. She was presented with the coveted Wings of Gold, marking the culmination of flight training with Helicopter Training Squadron 18, Naval Air Station Whiting Field, Milton, Fla. ■ **Lori (Hill) Lewis (NSCI '91)** teaches special education for the Santa Barbara city school system. She spent three years teaching special education for Teach for America in North Carolina, where she met her husband. The couple lives in Carpinteria.

■ **Wendy (Levander) Moran (NSCI '91)** works as a dietitian for the Women, Infants & Children program in Pittsburg, Calif. She resides in Martinez with her husband, **Michael Moran (ENVE '91)**, who has been with Montgomery Watson Engineers in Walnut Creek for the past five and a half years. ■ **Mark A. Morgenlaender (ME '91)** and his wife, **Yvette (HD '91)**, were married one week after graduating from Cal Poly. Mark earned a master's from the University of Washington and the couple returned to California, where Mark has been working in the pollution control industry. The couple live with their young daughter in Napa. ■ **Celeste L. Settrini-Robinson (AGB '91)** is a produce broker with Fresh Network in Salinas, where she does the morning agriculture news for the local NBC affiliate. She also works with her husband in their cattle operation. ■ **Wendy E. Thompson (POLS '91)** lives in Austin, Texas, as a "stay-at-home mom" with her young son. "I'm still quite interested in politics and eternally grateful for my education at Cal Poly," she says. ■ **Anne Warshaw (BIO '91)** is regional communications coordinator with Pioneer Hi-Bred International Inc. in Johnston, Iowa, the largest seed-corn company in the world. She has an M.S. in agricultural education in 1995 from Iowa State University and lives in Des Moines. ■ **Jose F. Arau (ARCH '92)** works with Brand + Allen, Architects, in San Francisco, as project manager for Coach Leatherware Stores. Previously he was with Wallace and Mays, Architects and Planners, helping design private airports and commercial and residential structures. He was selected by Rotary Club International to tour Taiwan as an Overseas Ambassador. He lives in San Francisco. ■ **Perry K. Carter (ME '92)** is an outside sales engineer with Caltrol Inc. He lives with his wife and young son in Claremont. ■ **Bonita Chandler (SOCS '92)** works in PC/administrative assistant recruitment for Montlick & Associates in Atlanta, Ga. She also teaches English as a second language in the evenings. ■ **Jeffrey T. Logan (MS PE '92)** is a clinical exercise physiologist at Good Samaritan Hospital in Los Angeles. He lives in Gardena. ■ **Robert S. Miller (CE**

'92) completed an eight-mile section of the California state water project as associate engineer and transferred to Caltrans in San Luis Obispo to act as a highway projects engineer. He lives with his family in Arroyo Grande.

■ **Carlos X. Noriega (CE '92)** was promoted to assistant traffic engineer with the city of San Diego. He represented the city at the San Diego State annual job fair, and volunteered for two weeks to work with inner-city youth in Atlanta, Ga., during the 1996 Olympic Games. ■ **Laurel O. Orradre (AGB '92)** lives with her husband, **Peter M. Orradre (MBA '93)**, and two young sons in San Luis Obispo. ■ **Myrtle M. Railey (REC '92)** is the manager of the Bureau of Land Management station in Jawbone Canyon. The station is an information center, an interpretive bookstore, and a first-aid station for off-highway vehicles. Railey lives in Tehachapi. ■ **Joe Robinson (MS CSC '92)** is owner of Jenga Consulting, an Oakland-based software consulting firm that he and his sister started in 1994. After Cal Poly, he worked as a programmer for Berkeley Systems, the company known for making the flying toasters screen-saver. ■ **Lisa A. Travis (POLS '92)** is a graduate of Hastings College of the Law. She practices in Fresno with the firm of Baker, Manock & Jensen, focusing on water, environmental, and agriculture law. ■ **James M. Xitco (BUS '92)** is a project manager for Air Conditioning Company Inc. in Glendale, where he oversees semiconductor construction. He lives in Northridge. ■ **Gregory S. Blumenstein (BUS '93)** is the national consulting manager for Informatica, a start-up software company whose product, Powermart, *Information Week* called "the runner-up as the most important software product in 1996." ■ **Kelly K. Brown (AGB '93)** is a sales representative for National Distributing Company in Denver, Colo., representing more than 10,000 labels. Her clients include Vail Associates and Copper Mountain Resort. Brown also writes a weekly wine column for the local newspaper and says, "Being involved with the wine marketing certificate program and the Vines to Wines (campus club) at Cal Poly has given me many advantages after graduation." ■ **Kelsey**


Corcoran (AGB '93) earned her MBA from Texas A&M University and plans to pursue a career in product management in Southern California.

■ **Timothy G. Hayes (CE '93)** is a transportation engineer at HDR Engineering Inc. Previously he was a project and design engineer for INCA Engineers Inc. Hayes is a member of the American Society of Civil Engineers. ■ **Tanya Kiani (MBA '93)** has been named director of college development for the Cuesta College Foundation, for which she will coordinate foundation special events, oversee the Alumni and Friends Association, and direct the annual fund. Prior to her new position, she served at Cal Poly as director of development for capital projects and as development coordinator for the College of Business. ■ **Michael A. Kipp (BUS '93)** is pursuing a master's degree in religious education at Nazarene Theological Seminary in Kansas City, Mo. He lives in Overland Park, Kan. ■ **Kevin Neil Martin (IE '93)** is an industrial and manufacturing development engineer with Hewlett-Packard.

He earned a master's in economics/operations management concentration from UC Santa Barbara in 1995. He and his wife live in Ft. Collins, Colo., where they enjoy nature and outdoor activities. ■ **Lorie Medeiros (HE '93)** and **Andrew Twisselman**, who studied animal science in 1989, were married in May 1996. Lorie is the owner of Azorian Foods in Santa Maria. Andrew is employed by Switzer Construction in Templeton. The couple live in San Luis Obispo. ■ **Rob Meyer (BUS '93)** is an associate CPA with the accounting firm of Jones and Schiller in San Francisco. ■ **Steven J. Mueller (ART '93)** writes that his photography career "is picking up momentum with a recent assignment to shoot a cover photograph and additional images of Johnny Cash for *New Country Magazine's* February 1996 issue." He has returned to Huntington Beach after apprenticing photographers for three years in New York City. ■ **Neal A. Pann (ARCH '93)** received his California state architectural license in December 1996. He is employed with Dahlin Group

Help Cal Poly Magazine ride the wave of rising production costs ...

... by sending in a voluntary subscription of \$25 or more. With your support, we can continue improving CPM's quality.



Here's my voluntary subscription (suggested check amount \$25):

Name

Address

City State Zip

Phone ()

I am: ☐ an alum ☐ parent ☐ friend Amount of subscription: \$

Please send coupon and check to *Cal Poly Magazine*, Heron Hall 204, Cal Poly, San Luis Obispo, CA 93407

98H CPFF 90120

Architecture Planning in San Ramon and lives in Livermore. ■ **Mark Scott (ME '93)** earned his MBA from the University of Chicago. ■ **Anna L. Sondeno (IT '93)** is a program manager with the Selectron Corporation's Fremont facility. She lives in San Jose. ■ **Matt Walterskirchen (ME '93)** is an aerospace engineer with Lockheed Martin Missiles & Space. Previously he worked for United Technologies Chemical Systems Division, a company that designs, tests, and builds solid-fuel rocket motors. ■ **Cathy L. Akers (BUS '94)** is a CPA and senior accountant with Hayashi & Wayland. She lives with her family in King City, and says she has achieved just about all her long-range goals except for continuing to advance in her profession and "hitting the lottery." ■ **Loren (Mannard) Anderson (HD '94)** earned her master's in social work from CSU Stanislaus and now plans to work on attaining her LCSW credential. She is married and lives in Denair. ■ **Brandy Bolt (OH '94)** is a horticulturist and retail manager for Hydrofarm, a San Rafael company that sells hydroponic gardening equipment. ■ **Rick Ekberg (IE '94)** and **Jill (Swearengin) Ekberg (LS '93)** were married in 1995. Rick is a manufacturing engineer at Watkins-Johnson Co. in Scotts Valley, and Jill teaches bilingual third grade in Watsonville. ■ **Scot Gorbet (GRC '94)** is a whitewater rafting guide in Costa Rica, using skills he developed while active in the "Escape Route" at Cal Poly. Gorbet has rafted or kayaked many western rivers as well as rivers in Austria, Switzerland, and Spain. He lives in Pavas, Costa Rica. ■ **Jonathan A. Grissom (BUS '94)** is a third-year law student at the University of San Diego School of Law. He has also served as lead articles editor for the *San Diego Law Review*, and was awarded the Dean's Outstanding Scholar Award (1995-97). ■ **Denise "Kathy" K. Headtke (SOCS '94)** earned an M.L.S. in library and information science in 1995 from San Jose State and works for the Paso Robles school district as a middle-school librarian. She lives in Arroyo Grande. ■ **Kimberley A. Mastako (MBS ENM '94)** is a researcher with Texas Transportation Institute. She is pursuing her Ph.D. at Texas A&M. She lives

in Bryan, Texas. ■ **Katherine D. McReynolds (BCHM '94)** is in her third year of chemistry graduate studies at the University of Arizona in Tucson. She has completed her preliminary oral exam and was awarded a departmental mid-career fellowship. ■ **Luis A. Montano (AE '94)** is serving with the U.S. Navy aboard the guided missile cruiser *USS John Paul Jones*, which recently participated with more than 15,000 sailors, marines, airmen, and coast guardsmen in pre-deployment exercises in the eastern Pacific Ocean. ■ **Russell C. Walter (PE '94)** is a physical therapy aide with North County Physical Therapy and Sports Center and an athletic trainer with Cuesta College. He and **Lisa Terracciano (PE '93)** were married in July 1996. ■ **Ashley Abell (AE '95)** is an agricultural specialist for Pacific Gas & Electric and a member of the Class of XXVI of the California Agricultural Leadership Program. ■ **Gregory Bayless (HIST '95)** teaches social science at Nordhoff High School. ■ **Susan Carey (MS PE '95)** has accepted a research position with the transplant services division of UC San Francisco. She will be working as an exercise physiologist in research involving kidney dialysis patients. Previously she worked as an adjunct faculty member in a San Diego junior college and as an exercise physiologist for two hospitals. She resides in Redwood City. ■ **Theresa Daniel (ARCE '95)** works for the Seattle-based firm of John Graham Associates/DLR Group as a structural engineer-in-training. She is working on the Ala Moana Center Phase V-A Expansion project. ■ **Fred M. Duckart (ME '95)** was promoted from a replication engineer to a shift manager at Americ Disc in Modesto. He will be married this fall. ■ **Ashley Fields (AGB '95)** works at Camptoons Productions in Pismo Beach as regional manager for Northern California and Arizona. ■ **Marc N. Haywood (AGB '95)** works in production/maintenance at Morning Star Packing in Williams. He lives with his wife and young daughter in Maxwell. ■ **Jennifer Kretschmer (ARCH '95)** works at Arthur Craig Steinman & Associates, Architects, a Palo Alto firm specializing in high-end

residential remodeling, renovation, and new construction. She was married in August. ■ **Ruben Antonio-Mosqueda (ART '95)** has joined Drawing Board Studios as an art director, assisting in corporate image development and full advertising campaigns. Formerly, he was a graphic designer for the Cal Poly Foundation. ■ **Brian A. Nosek (PSY '95)** received a five-year full fellowship to Yale University, where he is pursuing a Ph.D. in social psychology. ■ **Michelle Shoresman (POLS '95)** is coordinator of group services at Tahoe Women's Services in Incline Village. Her job is to inform the community about the nonprofit organization's services in counseling, crisis intervention, and support groups for women of all ages. ■ **John G. Talcott (CE '95)** was hired by the Parsons Corporation to assist a construction management team on the Metropolitan Water District of Southern California's Eastside Reservoir Project in Hemet. He makes his home in West Covina. ■ **Lorraine Campbell (FRSC '96)** and **Troy Javadi (CRSC '96)** were married in June 1996. Lorraine is employed in vineyard management, and Troy in farm services. The couple live in Templeton. ■ **Beth Griffin (FRSC '96)** is a research assistant in the Pathology Department at Seminis Vegetable Seeds in Woodland, where she works in quality assurance to ensure that seed lots are disease free. Her husband, **Michael Griffin (MS CSC '96)**, is a principal for American Management Systems, a technology consulting company, in Sacramento. ■ **Brian Petrocelli (AGB '96)** works for Camptoons Productions in Pismo Beach as director of marketing R&D and regional manager for Southern California and Colorado. ■ **Chad Yager (HIST '96)** and **Jodi (Plank) Yager (NSCI '96)** were married in April and live in Valencia. Chad is an educator at Dubnoff Center for Children, a private nonprofit school for students with special needs. He is simultaneously earning a single-subject credential at National University. Jodi is a patient services manager at Morrison Healthcare Inc., where she supervises 40 employees. ☐