

THE TOOLS OF ENGAGEMENT

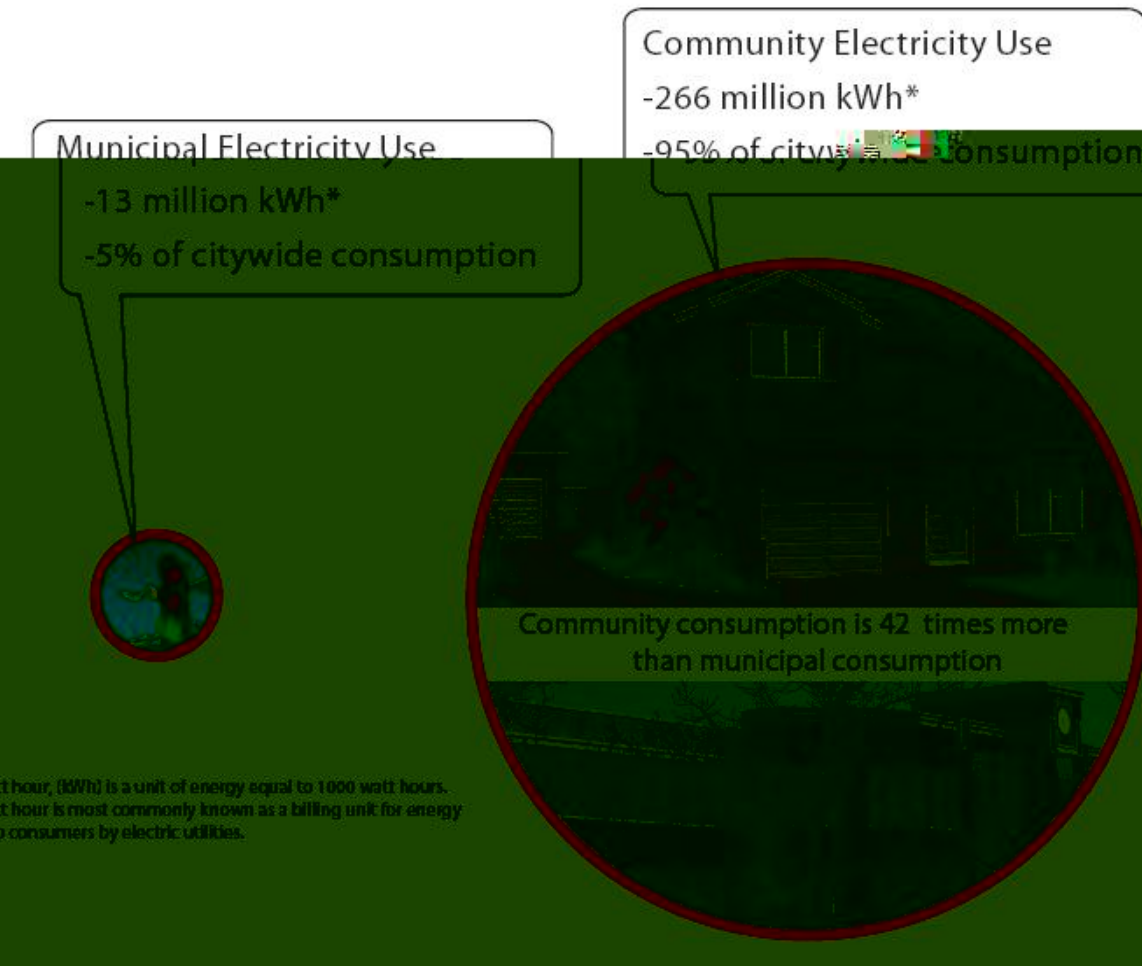
PNMC®

Nora De Cuir
Director
Community Engagement + Facilitation

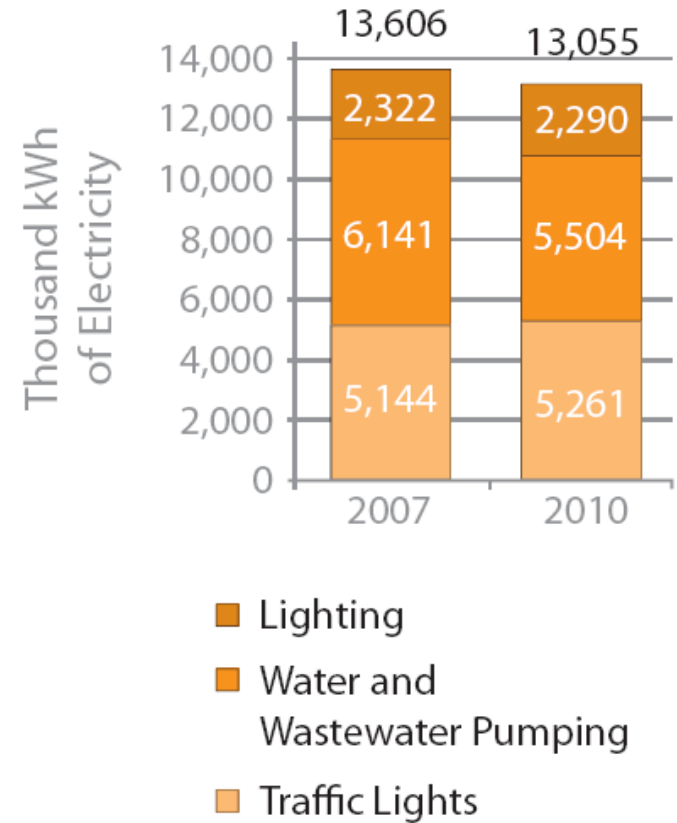


- the cultural landscape of participation is always shifting
- a variety of opinions occurs naturally with a robust democratic process

consider this



MUNICIPAL ELECTRICITY USE 2007-2010



tools for sharing data

for context

- share “fun” facts
- use graphics

for understanding of tradeoffs or key concepts

- use graphics
- provide opportunity for questions and responses

tools for sharing data

WHAT ENERGY SAVING ACTIVITIES INTEREST YOU?

STATION 3

ACTIVITIES TO REDUCE ENERGY USE

I ALREADY DO THIS

IF SO, PLEASE PLACE STICKER IN THIS COLUMN NEXT TO THE APPROPRIATE ACTIVITY

I WOULD TRY THIS

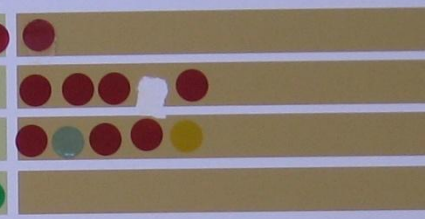
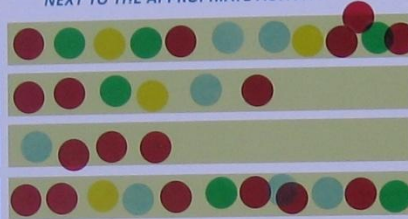
IF SO, PLEASE PLACE STICKER IN THIS COLUMN NEXT TO THE APPROPRIATE ACTIVITY

NOT INTERESTED

IF NOT, PLEASE PLACE STICKER IN THIS COLUMN NEXT TO THE APPROPRIATE ACTIVITY

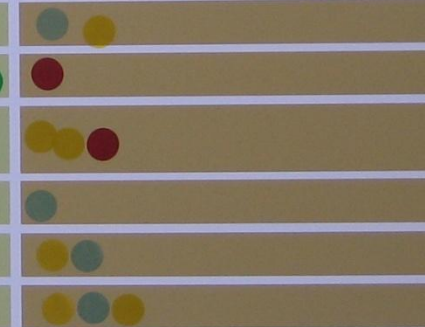
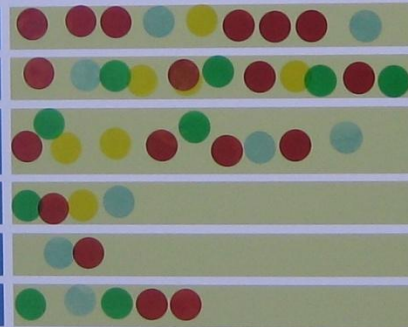
Actions for Energy Conservation

1. Turn off lights when not in use
2. Unplug appliances/electronics when not in use
3. Reduce use of electronic appliances
4. Use blinds, internal or external shades, or curtains to retain or repel heat



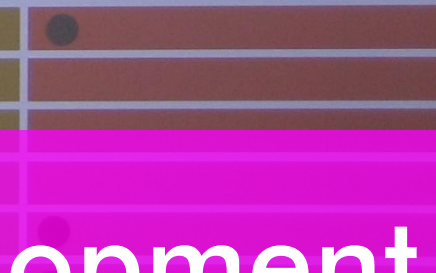
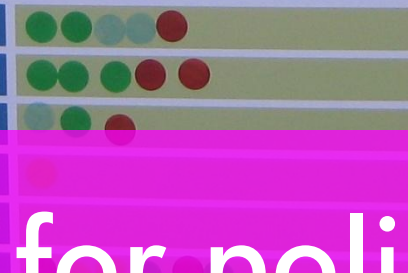
Energy Improvements

5. Replace older light bulbs with energy-efficient bulbs
6. Replace older appliances/electronics with energy-efficient models
7. Replace older heating/ventilation/air conditioning unit and/or water heater with energy-efficient model
8. Install shower controls to select and change water temperature
9. Use variable speed pool pump
10. Install skylights and/or light shelves to maximize natural lighting



Whole House/Office Strategies

11. Insulate attics, walls, and/or hot water pipes
12. Upgrade to more highly insulating, heat-reflective windows
13. Seal air and duct leaks
14. Install motion-sensor lighting to light areas only when in use
15. Use cool roof materials or heat-reflective paint to reduce building heat
16. Plant trees and vegetation to cool building



tools for policy development

for large groups

- survey preference
- ask questions that people relate to

for small groups

- use red light/green light survey to narrow
- respect contributions from local experts

tools for policy development



tools to generate ideas

- affinity mapping
- materials to interact with
- range of ways to participate

tools to generate ideas



tools to gather a broad range of feedback

- the importance of blank paper
- provide options for all stakeholders
- ask questions that allow for gracious disagreement

**tools to generate a broad range of
feedback**

- innovation and flexibility are needed for cultural sensitivity
- provide room for dissenting opinions

remember this

THE TOOLS OF ENGAGEMENT

PMIC®

Nora De Cuir
ndecuir@pmcworld.com
Community Engagement + Facilitation

