

PROJECT GOALS

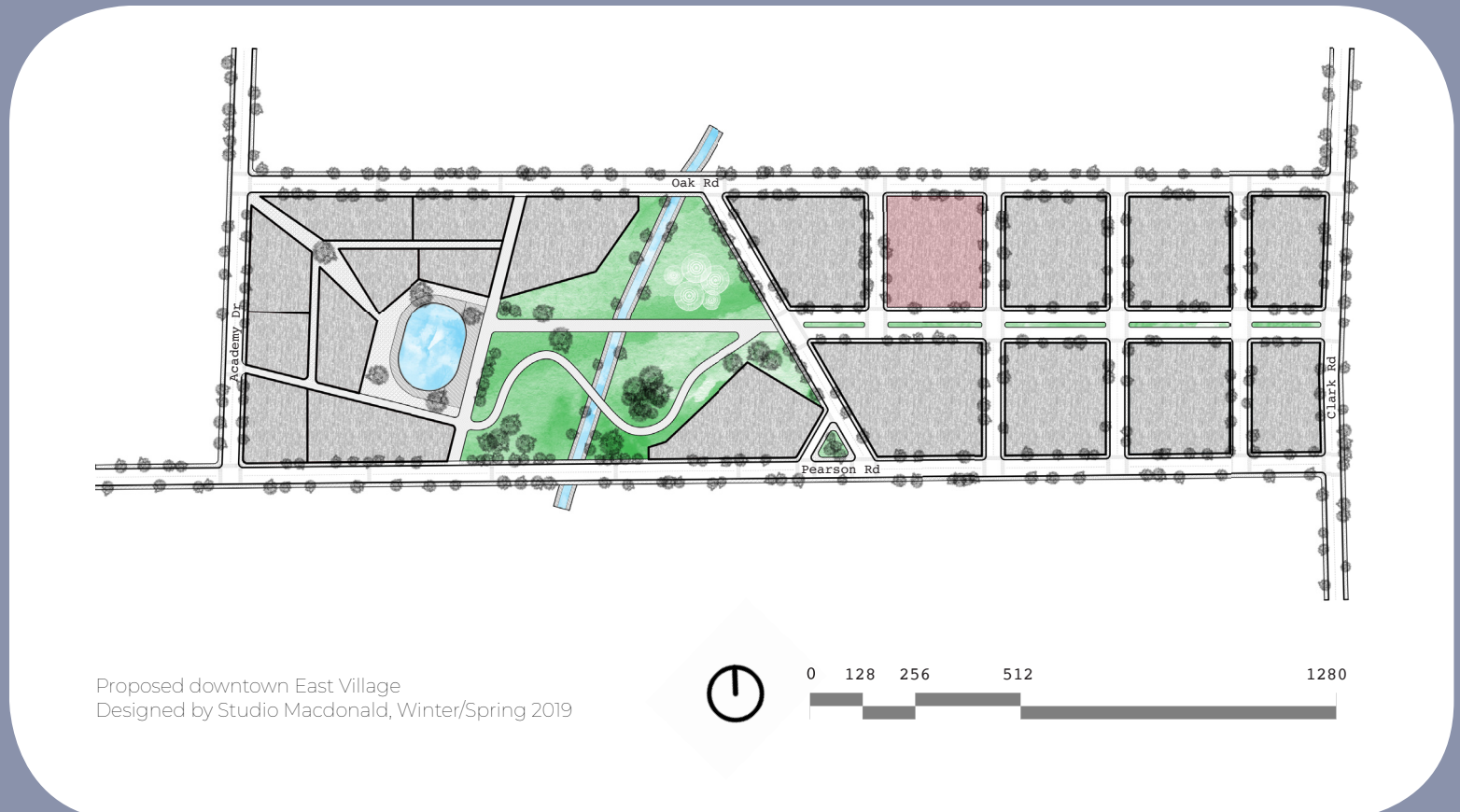
Bars of housing, dispersed courtyards, and green spaces foster interaction and community growth between tenants. The housing units can accommodate both individuals and growing families alike. The podium style allows for safety and privacy while still living in the proposed cultural heart of Paradise. Following the goals laid out in our initial planning, this project seeks to promote community among a diverse group of individuals and families within the downtown. Additionally, it will provide commercial spaces at the street level to contribute to more revenue-generating spaces.

VR CODE



SITE PLANS

1/32" = 1'

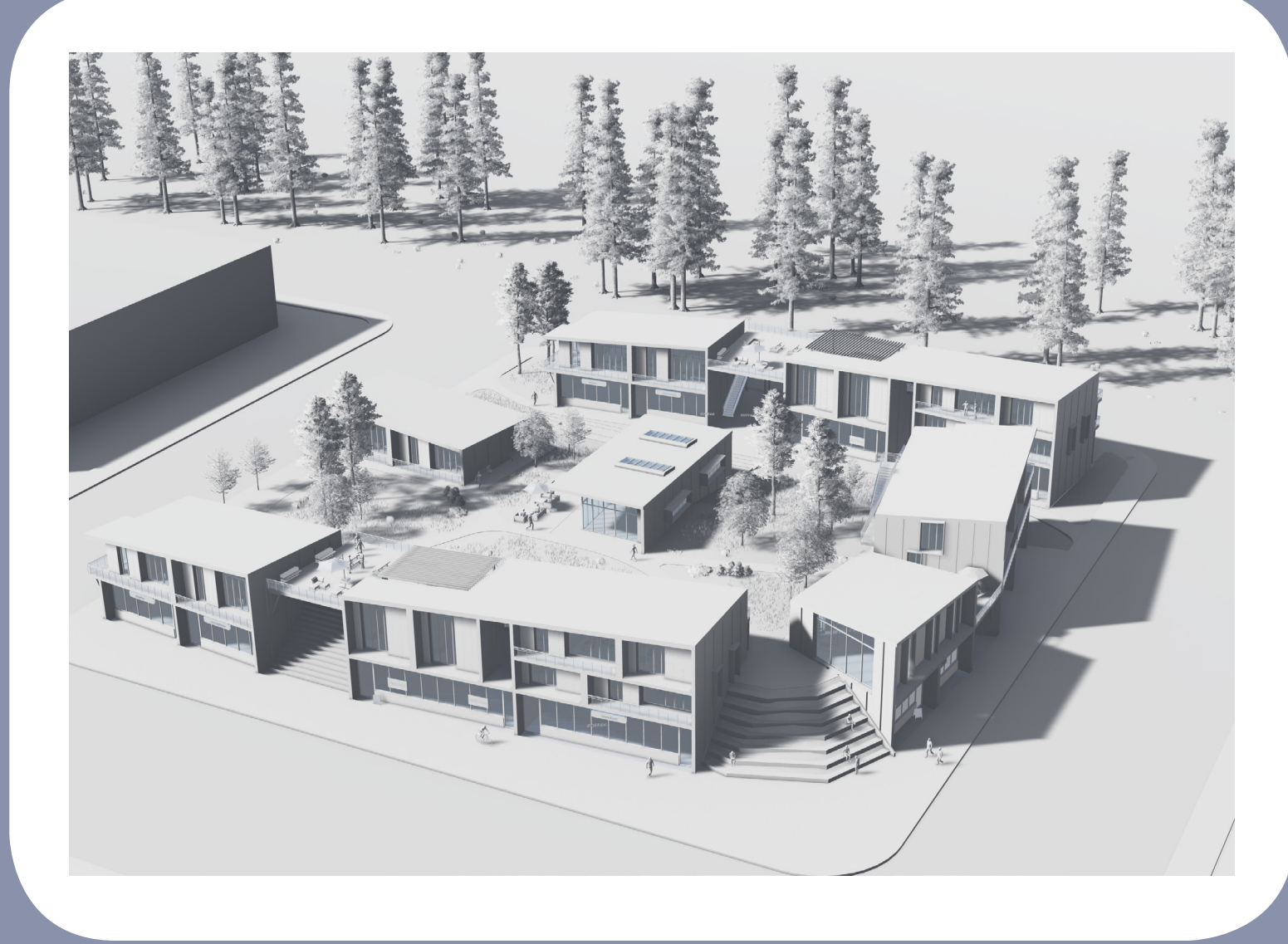


UNIT + BAR PLANS

1/2" = 1' 1/16" = 1'

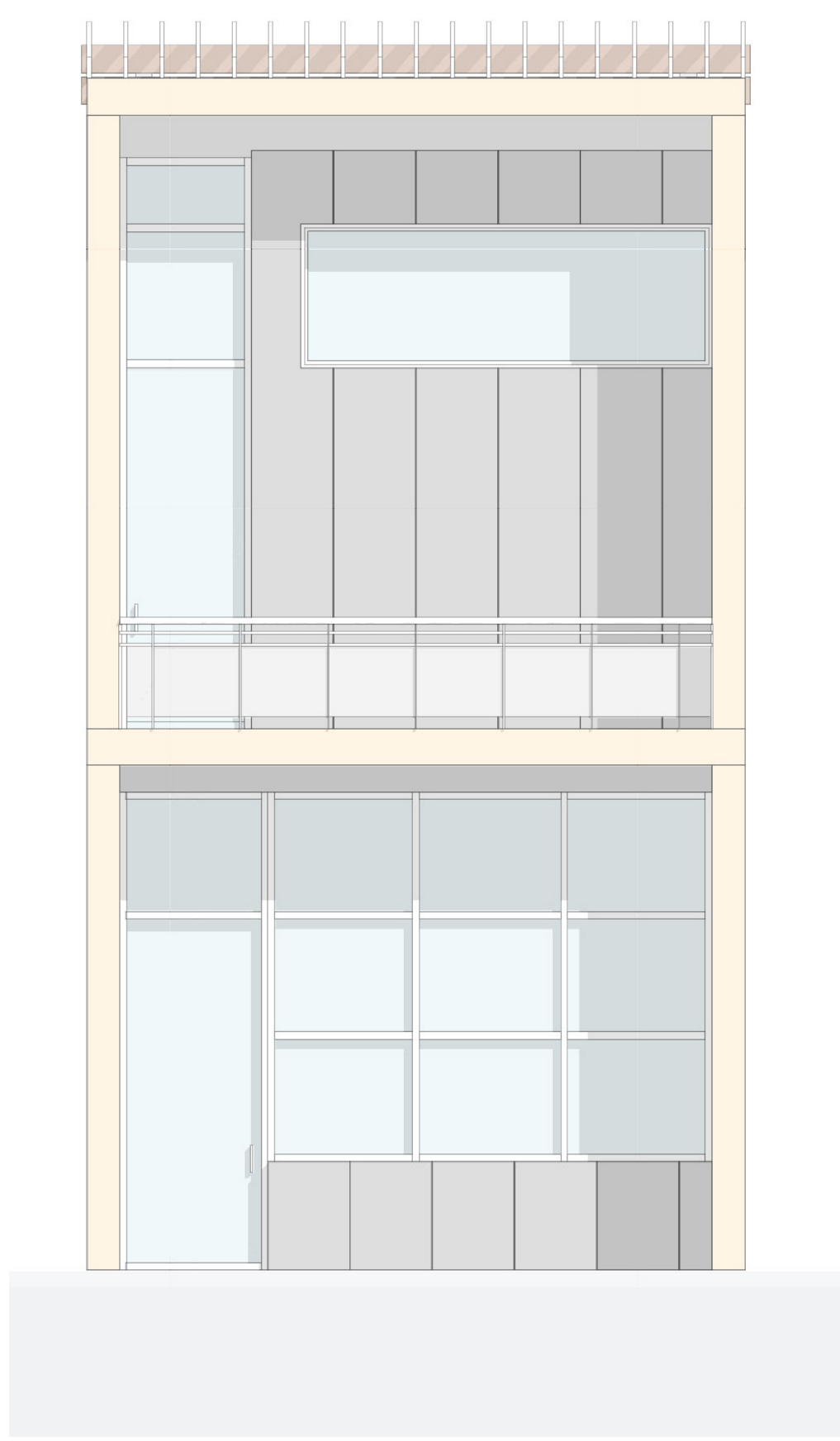
Framework is intended to accommodate a range of family sizes. The smallest units work for individuals and couples, while the two larger units are meant for growing and established families.

SITE RENDERS



SECTIONS + ELEVATION

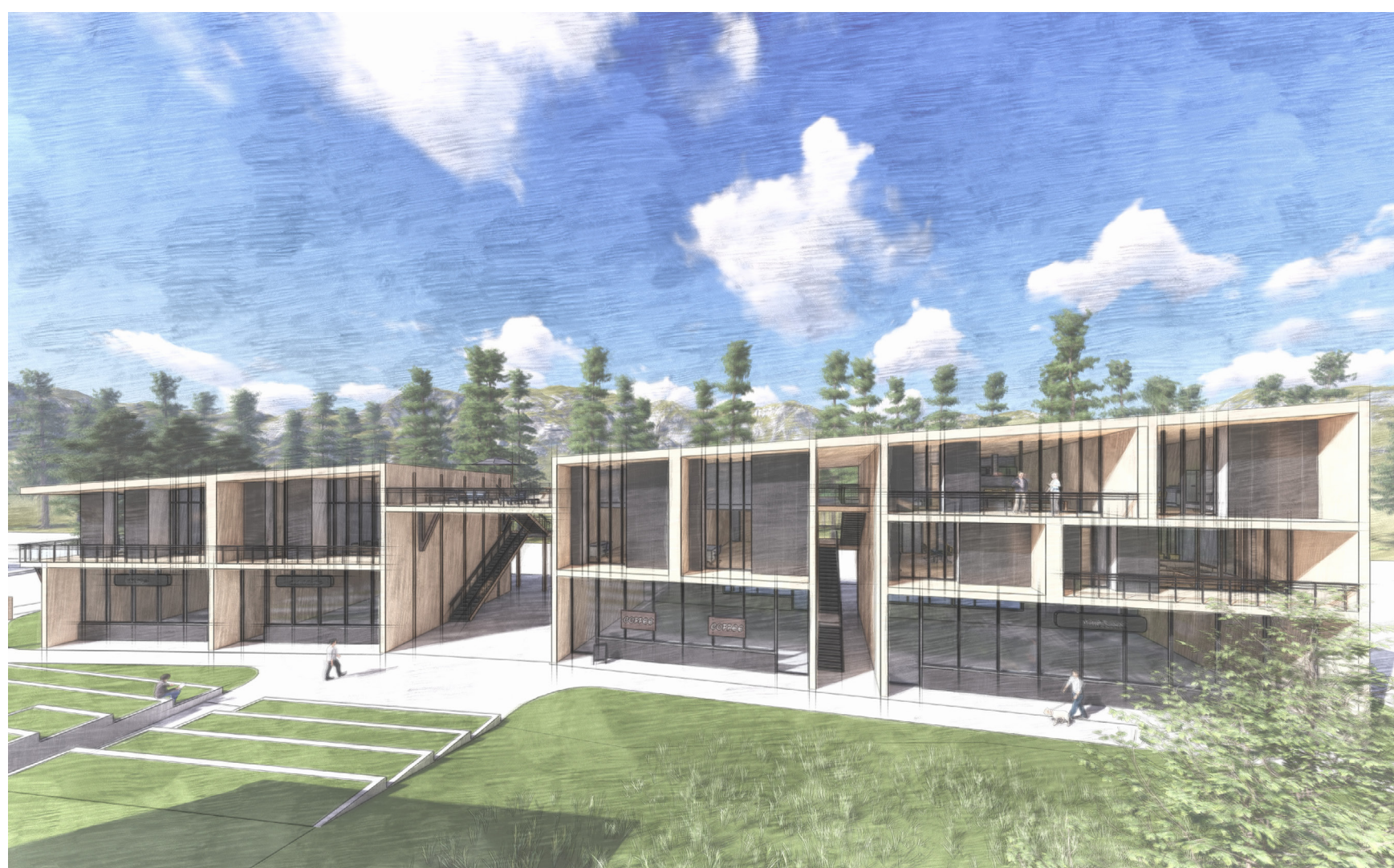
1/2" = 1'



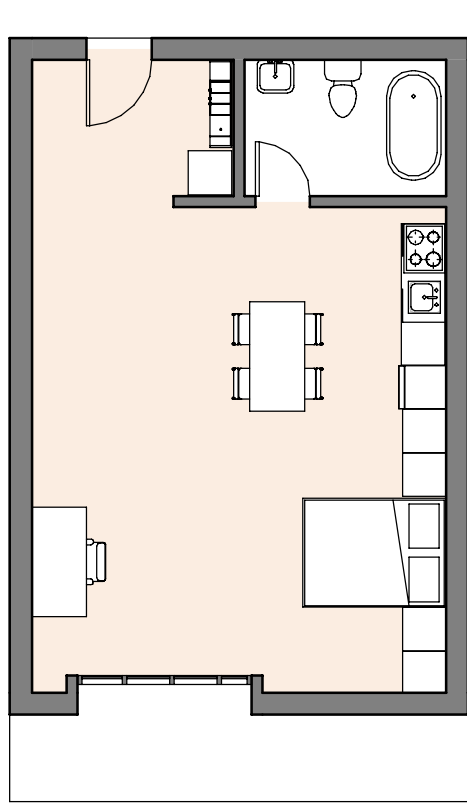
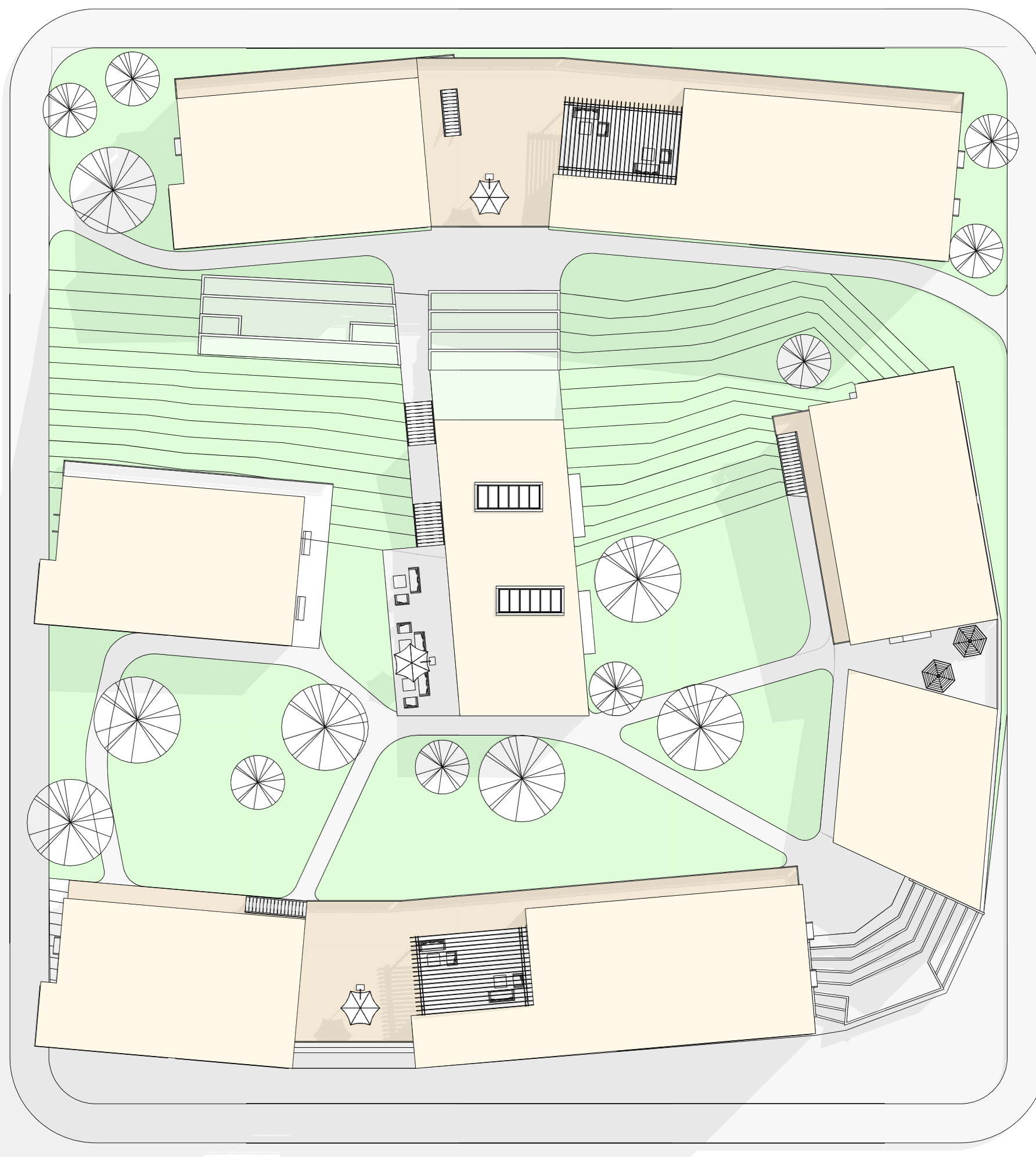
SITE SECTION

1/16" = 1'

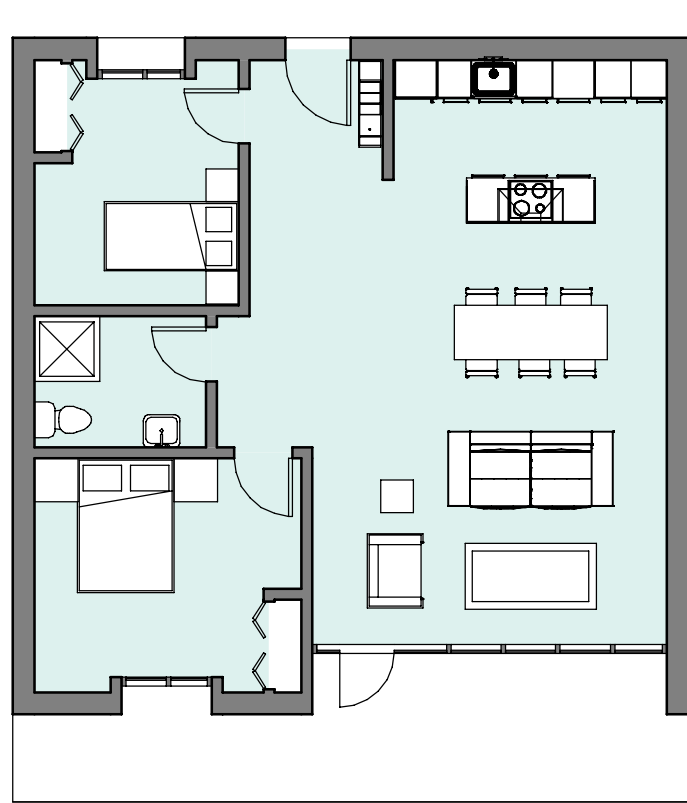
Framework uses a podium style to allow for parking beneath the site right off of the street. This also creates a sense of privacy and safety for the residents who live on the upper levels.



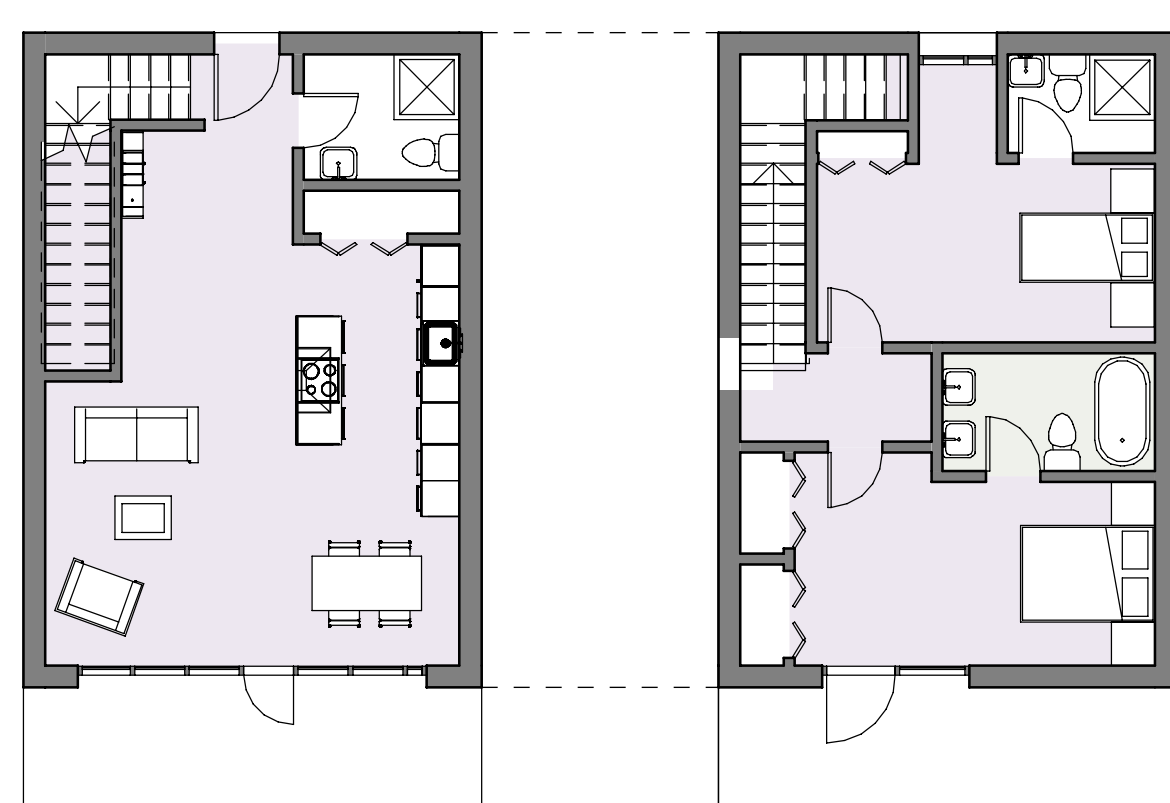
Housing bars border the street around the site. At the street level, shops and cafes are open to the public, and at the podium level, residents have the privacy of their own units. The central hub within the site serves as the social center point and meeting place for residents and visitors alike. Also at the podium level is a small gym and active spaces for residents use.



600 SF UNIT



900 SF UNIT



FIRST FLOOR SECOND FLOOR
1200 SF UNIT

